

**BERGA®**

ENHANCE LIFESTYLE  
LAMINATI



Against CRACK after applying BERGA sheet

EUROPEAN

SOLID SURFACE

SERIES

**KRYSTALA®**

SERIES

WORLD OF TECHNOLOGY

# Welcome To **THE WORLD OF TECHNOLOGY**



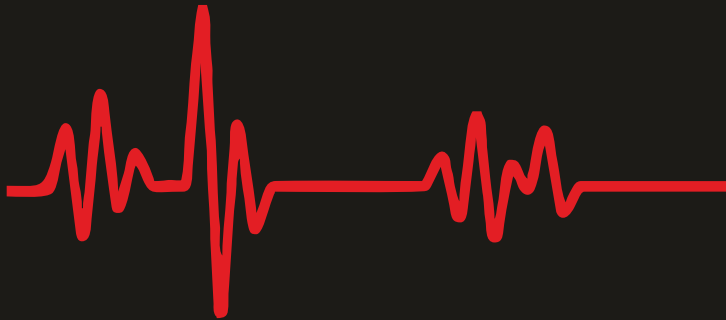
**GERMAN TECHNOLOGY**

Against CRACK after  
applying **BERGA** sheet



**NEW Dolphin Nose Technology**

**EDGELESS Technology**



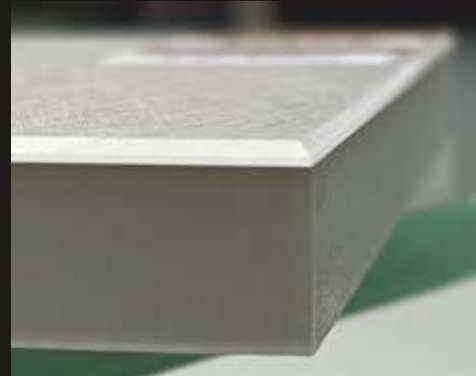
**BREATHING  
TECHNOLOGY**

In Summer, Winter & Rainy... Base Material Like Plywood, MDF etc.  
get expand & contract. Due to that crack arrives in normal laminate.  
Because of **BREATHING TECHNOLOGY** crack does not happen in **BERGA**  
LAMINATI

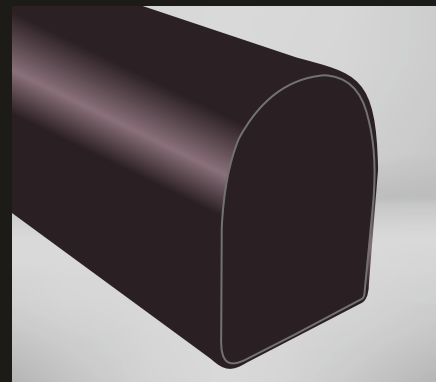


# TECHNOLOGY

## CHAMFERING Technology



## 90° BEND Technology



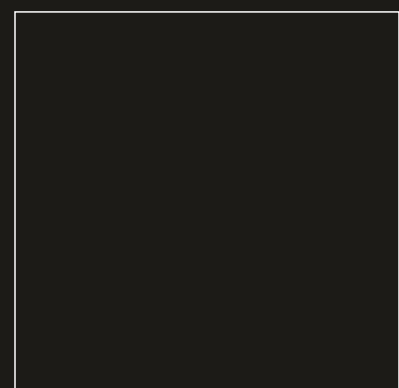
## POST FORMING Technology



## BUFFING Technology

## BOTH SIDE USABLE Technology

**CNC CUTTING**  
CAN BE DONE IN  
1 mm, 1.5 mm & 2 mm





*“INNOVATION AT HEART .....  
COURAGE TO DREAM .... &  
PASSION FOR PERFECTION.....”*

**BERGA** is leading Brand FOR DECORATIVE PRODUCTS.

**BERGA** strives to bring new high end innovative and revolutionary technology from all over the world which gives new ways of APPLICATION .

Our products are Appealing, Fashionable, Durable and Elegant .

We offer a rich variety of Acrylic (Back painted Glass), Homogenous acrylic core and different ways of APPLICATION of products which enhances the beauty wherever applied.

We offer **revolutionary** decorative products with different properties relevant to different applications.

**New Revolutionary BREATHING Technology**  
**New 3D Technology**  
**GERMAN Technology**  
**New Revolutionary Sophisticated EDGELESS Technology**  
**90° BEND Technology**  
**CHAMFERING Technology**  
**BUFFING Technology**  
**POST FORMING Technology**

Due to our variety of laminate technology, **BERGA** has been able to supply quality laminated material to different markets and our laminate can be used as alternates to back painted glass/veneer etc.

Here at **BERGA** we want our decorative laminates not only to transform spaces, but also to enrich the lives of all of those who come in contact with them.

Professionals such as architects, interior designers and end consumers can rely on us to immerse their décor ideas with elegance and character.

**Trust:** We trust people to be reliable and responsible and earn their trust similarly.

**Speed:** We are quick to decide, respond and execute.

**Performance:** We value performance across products, people and processes. Innovative technology and creative solution have been our guiding principle from day one.

**Team Work:** We realize the uniqueness of the product and hence are always ready to provide technical support if needed.

**Learning:** We encourage learning; and nurturing talent

We implement these core values in every aspect of our operation, through which we foster innovation in order to deliver the very best possible laminates.



# KRYSTALA<sup>®</sup>

## SERIES

*UNICO*<sup>®</sup>  
KRYSTALA<sup>®</sup> 2

*UNICO*<sup>®</sup>  
KRYSTALA<sup>®</sup> 1.5

*UNICO*<sup>®</sup>  
KRYSTALA<sup>®</sup> 1

  
**Alvaroz**<sup>®</sup>  
KRYSTALA<sup>®</sup>

 **OPACO**

  
JACQUARDS



# Alvaroz<sup>®</sup>

## KRYSTALA<sup>®</sup>

Against CRACK after  
applying **BERGA** sheet



GERMAN  
Technology



New Revolutionary  
BREATHING  
Technology



CHAMFERING  
Technology



Anti Bacterial



Anti Finger Print



2mm Thick



CNC Cutting



NO BLACK EDGES



Termite &  
Borer Free



NON TOXIC



WATER PROOF

90° bend **NOT TO BE DONE** in this series.

• Kindly note: **EDGELESS** process to be done exclusively under the guidance of expert.  
**CHAMFERING & CNC CUTTING** can be done in **1.5 mm & 2 mm** thickness at your convenience, by yourself.

\* \* No Guarantee In any circumstances. There can be colour variations In material from different batches. It Is advised to use same batch material to avoid colour variations.



EXPERIENCE THE LUXURY

CHAMFERING TECHNOLOGY



2 mm

**BS-33021**



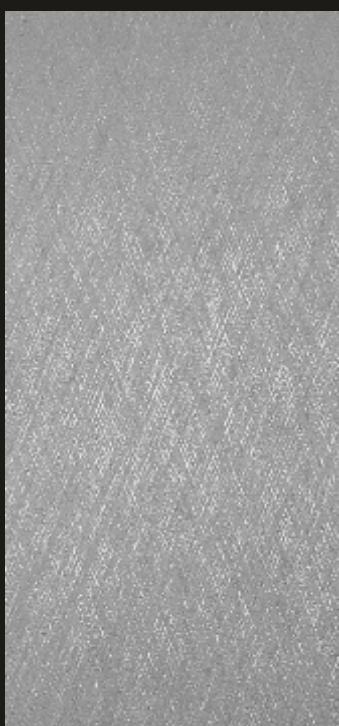
2 mm

**BS-33014**



2 mm

**BS-33007**



2 mm

**BS-33056**



2 mm

**BS-33045**



2 mm

**BS-33001**

90° bend **NOT TO BE DONE** in this series.

• Kindly note: **EDGELESS** process to be done exclusively under the guidance of expert.  
**CHAMFERING & CNC CUTTING** can be done in **1.5 mm & 2 mm** thickness at your convenience, by yourself.

\* \* No Guarantee In any circumstances. There can be colour variations In material from different batches. It Is advised to use same batch material to avoid colour variations.



# UNICO® KRYSTALA® 2

2 mm Thickness



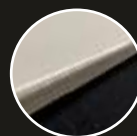
GERMAN  
Technology



New Revolutionary  
BREATHING  
Technology



BUFFING  
Technology



EDGELESS  
Technology



CHAMFERING  
Technology



Anti Bacterial



SUPERIOR HIGH  
GLOSS



CNC Cutting



NO BLACK EDGES



Termite &  
Borer Free



NON TOXIC



WATER PROOF



2 mm

**B-P-23033**



2 mm

**B-P-23002**



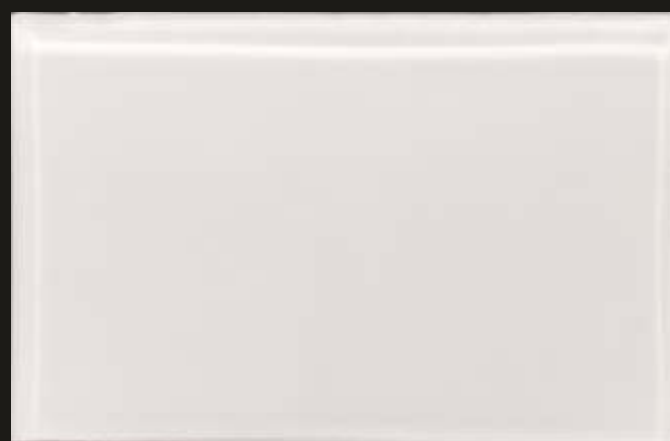
2 mm

**B-P-23006**



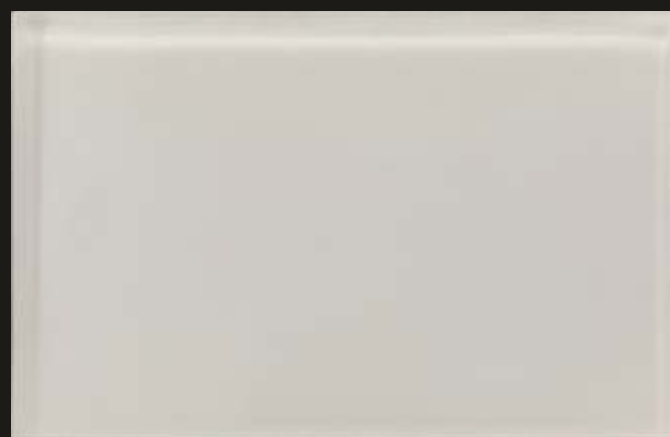
2 mm

**B-P-23022**



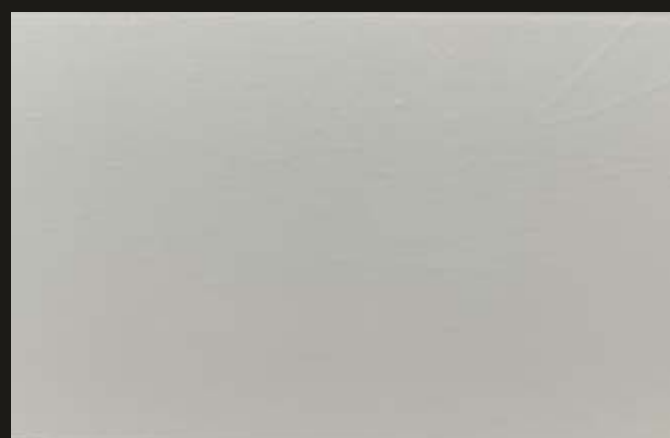
2 mm

**B-P-23021**



2 mm

**B-P-23007**



2 mm

**B-P-23045**

## BEST IN CLASS & TECHNOLOGY

**90° bend NOT TO BE DONE** in this series.

• Kindly note: **EDGELESS** process to be done exclusively under the guidance of expert.  
**CHAMFERING & CNC CUTTING** can be done in **1.5 mm & 2 mm** thickness at your convenience, by yourself.

\* \* No Guarantee In any circumstances. There can be colour variations In material from different batches. It Is advised to use same batch material to avoid colour variations.



TRANSFORM AMBIANCE INTO  
STYLISH AVENUES



2 mm

**B-P-23031**



2 mm

**B-P-23029**



2 mm

**B-P-23056**



2 mm

**B-P-23015**



**90° bend NOT TO BE DONE** in this series.

• Kindly note: **EDGELESS** process to be done exclusively under the guidance of expert.

**CHAMFERING & CNC CUTTING** can be done in **1.5 mm & 2 mm** thickness at your convenience, by yourself.

\* \* No Guarantee In any circumstances. There can be colour variations In material from different batches. It Is advised to use same batch material to avoid colour variations.

**BREATHING TECHNOLOGY**



Against CRACK after  
applying **BERGA** sheet



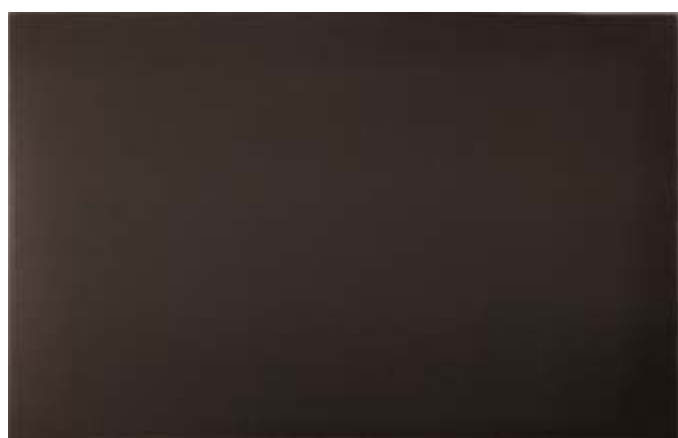
2 mm

**B-P-23020**



2 mm

**B-P-23003**



2 mm

**B-P-23054**



2 mm

**B-P-23044**

**90° bend NOT TO BE DONE** in this series.

• Kindly note: **EDGELESS** process to be done exclusively under the guidance of expert.  
**CHAMFERING & CNC CUTTING** can be done in **1.5 mm & 2 mm** thickness at your convenience, by yourself.

\* \* No Guarantee In any circumstances. There can be colour variations In material from different batches. It Is advised to use same batch material to avoid colour variations.



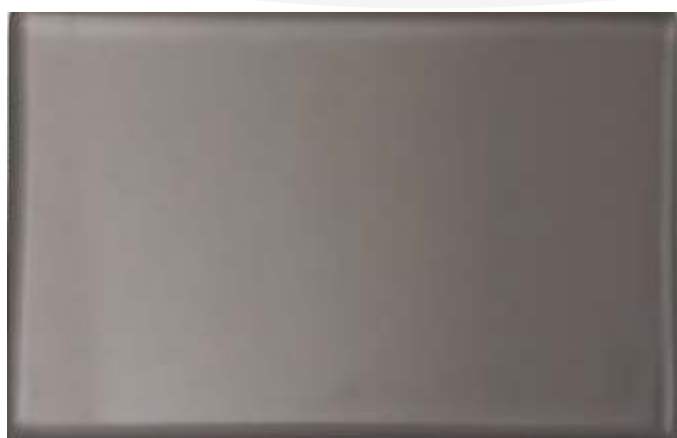
2 mm

**B-P-23004**



2 mm

**B-P-23053**



2 mm

**B-P-23014**



2 mm

**B-P-23001**



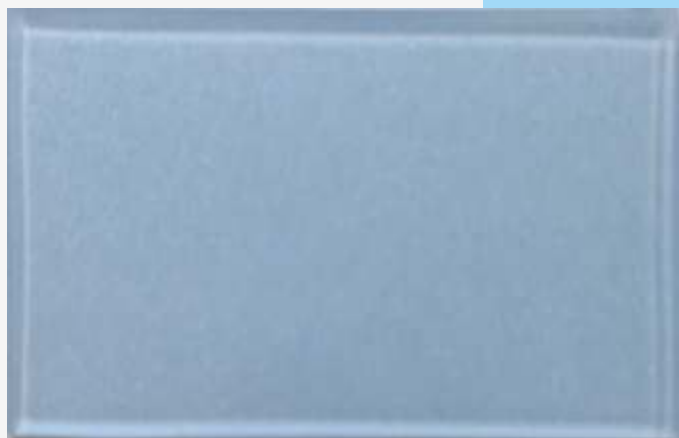
**90° bend NOT TO BE DONE** in this series.

• Kindly note: **EDGELESS** process to be done exclusively under the guidance of expert.

**CHAMFERING & CNC CUTTING** can be done in **1.5 mm & 2 mm** thickness at your convenience, by yourself.

\* \* No Guarantee In any circumstances. There can be colour variations In material from different batches. It Is advised to use same batch material to avoid colour variations.





2 mm

**B-P-23048**



2 mm

**B-P-23041**



2 mm

**B-P-23012**



2 mm

**B-P-23039**



**90° bend NOT TO BE DONE** in this series.

• Kindly note: **EDGELESS** process to be done exclusively under the guidance of expert.  
**CHAMFERING & CNC CUTTING** can be done in **1.5 mm & 2 mm** thickness at your convenience, by yourself.

\* \* No Guarantee In any circumstances. There can be colour variations In material from different batches. It Is advised to use same batch material to avoid colour variations.

# EDGELESS TECHNOLOGY

## NEW Dolphin Nose Technology



2 mm

**B-P-23028**



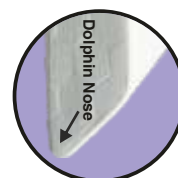
2 mm

**B-P-23013**



2 mm

**B-P-23046**





# CHAMFERING TECHNOLOGY



2 mm

**B-P-23027**



2 mm

**B-P-23008**



2 mm

**B-P-23005**



**90° bend NOT TO BE DONE** in this series.

• Kindly note: **EDGELESS** process to be done exclusively under the guidance of expert.  
**CHAMFERING & CNC CUTTING** can be done in **1.5 mm & 2 mm** thickness at your convenience, by yourself.

\* \* No Guarantee In any circumstances. There can be colour variations In material from different batches. It Is advised to use same batch material to avoid colour variations.



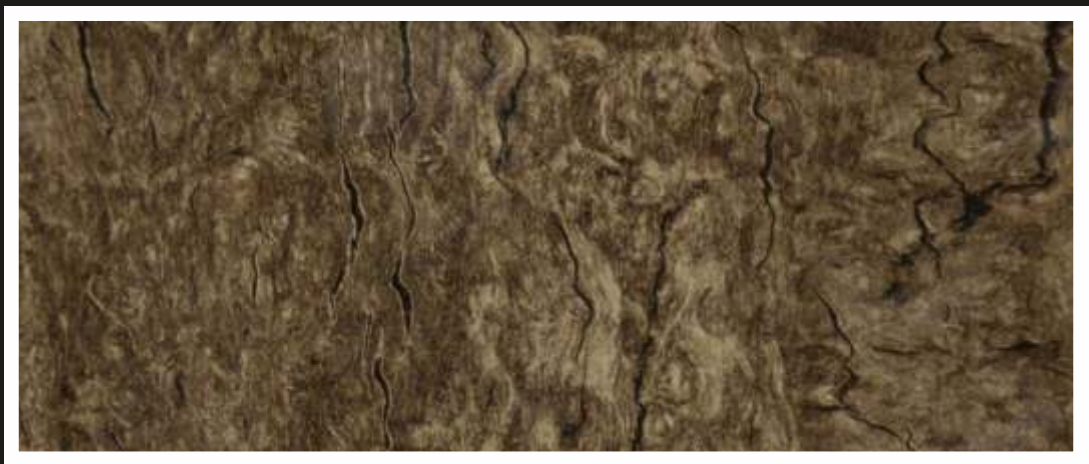
Against **CRACK** after  
applying **BERGA** sheet



2 mm

**B-P-21035**

## GERMAN TECHNOLOGY



2 mm

**B-P-21036**

## BREATHING TECHNOLOGY

**90° bend NOT TO BE DONE** in this series.

• Kindly note: **EDGELESS** process to be done exclusively under the guidance of expert.  
**CHAMFERING & CNC CUTTING** can be done in **1.5 mm & 2 mm** thickness at your convenience, by yourself.

\* \* No Guarantee In any circumstances. There can be colour variations In material from different batches. It Is advised to use same batch material to avoid colour variations.

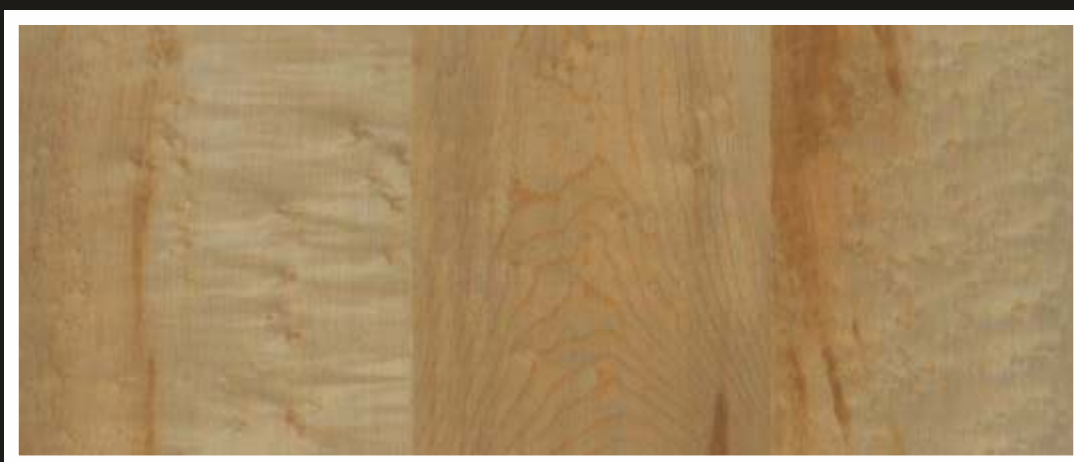
## SUPERIOR HIGH GLOSS



2 mm

**B-P-21037**

## BUFFING TECHNOLOGY



2 mm

**B-P-21033**

## EDGELESS TECHNOLOGY

**90° bend NOT TO BE DONE** in this series.

• Kindly note: **EDGELESS** process to be done exclusively under the guidance of expert.  
**CHAMFERING & CNC CUTTING** can be done in **1.5 mm & 2 mm** thickness at your convenience, by yourself.

\* \* No Guarantee In any circumstances. There can be colour variations In material from different batches. It Is advised to use same batch material to avoid colour variations.

Against CRACK after  
applying **BERGA** sheet



# UNICO® KRYSTALA® 1.5

1.5 mm Thickness



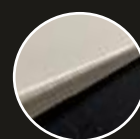
GERMAN  
Technology



New Revolutionary  
**BREATHING**  
Technology



BUFFING  
Technology



EDGELESS  
Technology



CHAMFERING  
Technology



Anti Bacterial



SUPERIOR HIGH  
GLOSS



CNC Cutting



NO BLACK EDGES



Termite &  
Borer Free



NON TOXIC



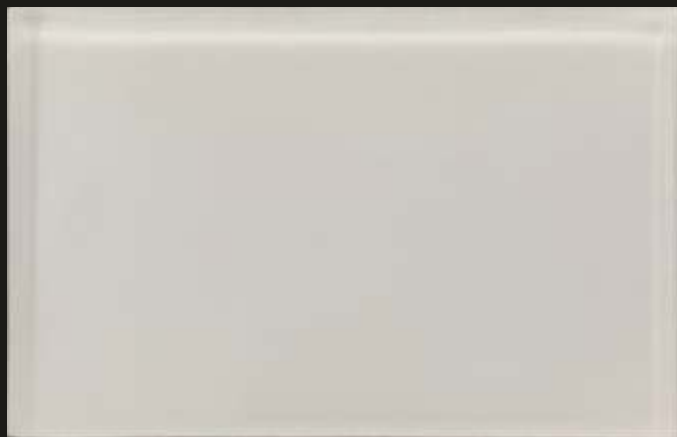
WATER PROOF

90° bend **NOT TO BE DONE** in this series.

• Kindly note: **EDGELESS** process to be done exclusively under the guidance of expert.  
**CHAMFERING & CNC CUTTING** can be done in **1.5 mm & 2 mm** thickness at your convenience, by yourself.

\* \* No Guarantee In any circumstances. There can be colour variations In material from different batches. It Is advised to use same batch material to avoid colour variations.





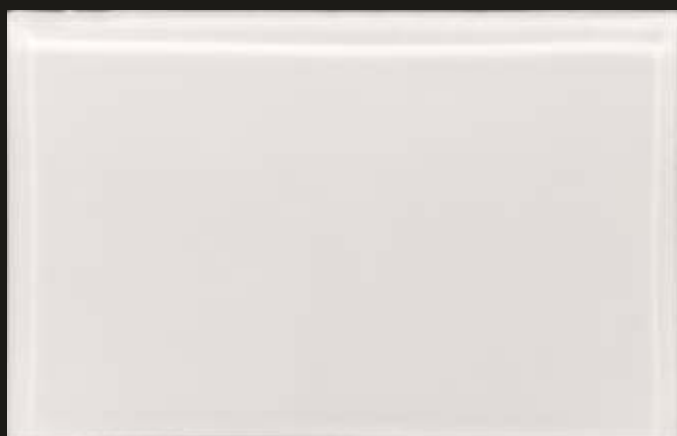
1.5 mm

**B-P-153007**



1.5 mm

**B-P-153045**



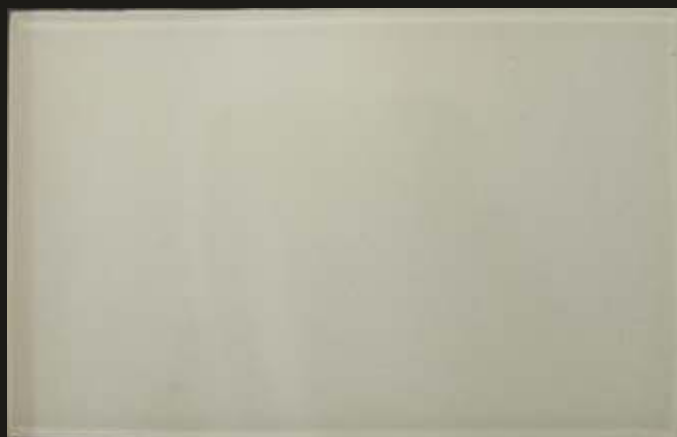
1.5 mm

**B-P-153021**



1.5 mm

**B-P-153033**



1.5 mm

**B-P-153022**



1.5 mm

**B-P-153002**

## CHAMFERING TECHNOLOGY



1.5 mm

**B-P-153020**

90° bend **NOT TO BE DONE** in this series.

• Kindly note: **EDGELESS** process to be done exclusively under the guidance of expert.

**CHAMFERING & CNC CUTTING** can be done in **1.5 mm & 2 mm** thickness at your convenience, by yourself.

\* \* No Guarantee In any circumstances. There can be colour variations In material from different batches. It Is advised to use same batch material to avoid colour variations.





1.5 mm

**B-P-153031**



1.5 mm

**B-P-153015**



1.5 mm

**B-P-153056**



1.5 mm

**B-P-153029**

**90° bend NOT TO BE DONE** in this series.

• Kindly note: **EDGELESS** process to be done exclusively under the guidance of expert.  
**CHAMFERING & CNC CUTTING** can be done in **1.5 mm & 2 mm** thickness at your convenience, by yourself.

\*\* No Guarantee In any circumstances. There can be colour variations In material from different batches. It Is advised to use same batch material to avoid colour variations.



1.5 mm

**B-P-153001**



1.5 mm

**B-P-153039**



1.5 mm

**B-P-153012**



1.5 mm

**B-P-153052**

**90° bend NOT TO BE DONE** in this series.

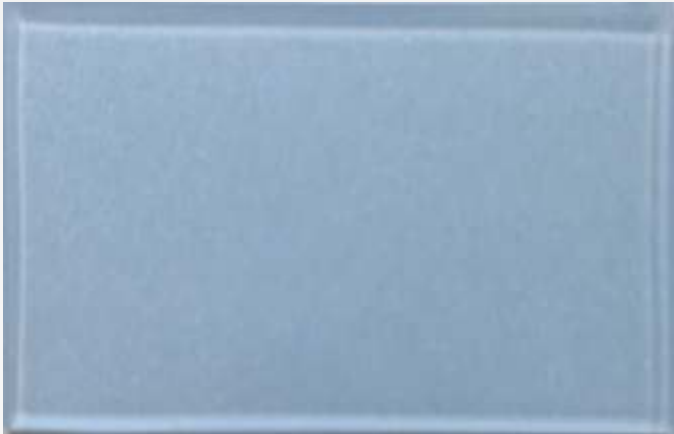
• Kindly note: **EDGELESS** process to be done exclusively under the guidance of expert.  
**CHAMFERING & CNC CUTTING** can be done in **1.5 mm & 2 mm** thickness at your convenience, by yourself.

\* \* No Guarantee In any circumstances. There can be colour variations In material from different batches. It Is advised to use same batch material to avoid colour variations.



1.5 mm

B-P-153041



1.5 mm

B-P-153048

SUPERIOR

HIGHLY

GLOSS



1.5 mm

B-P-153008

NO

BLACK

EDGES

90° bend NOT TO BE DONE in this series.

- Kindly note: **EDGELESS** process to be done exclusively under the guidance of expert.

**CHAMFERING & CNC CUTTING** can be done in **1.5 mm & 2 mm** thickness at your convenience, by yourself.

\* \* No Guarantee In any circumstances. There can be colour variations In material from different batches. It Is advised to use same batch material to avoid colour variations.





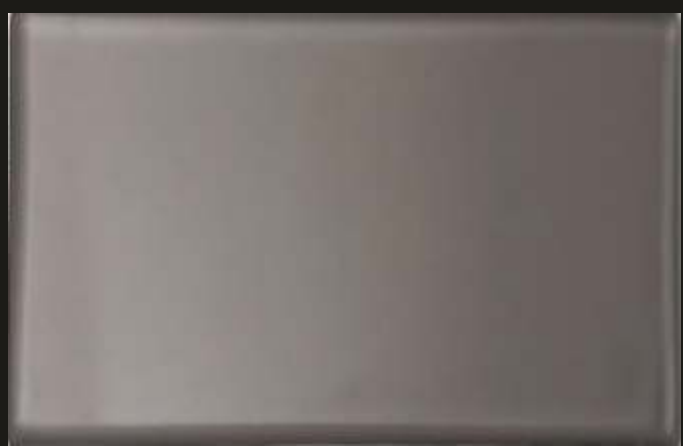
1.5 mm

**B-P-153004**



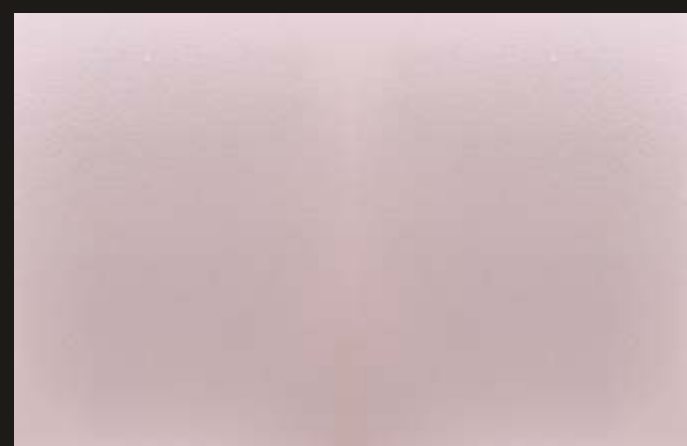
1.5 mm

**B-P-153044**



1.5 mm

**B-P-153014**



1.5 mm

**B-P-153009**

**90° bend NOT TO BE DONE** in this series.

• Kindly note: **EDGELESS** process to be done exclusively under the guidance of expert.  
**CHAMFERING & CNC CUTTING** can be done in **1.5 mm & 2 mm** thickness at your convenience, by yourself.

\* \* No Guarantee In any circumstances. There can be colour variations In material from different batches. It Is advised to use same batch material to avoid colour variations.



1.5 mm

**B-P-1521035**



**GERMAN Technology**



1.5 mm

**B-P-1521032**



**Against CRACK after  
applying **BERGA** sheet**



1.5 mm

**B-P-1521038**

**NEW Dolphin Nose Technology**

**90° bend NOT TO BE DONE** in this series.

• Kindly note: **EDGELESS** process to be done exclusively under the guidance of expert.  
**CHAMFERING & CNC CUTTING** can be done in **1.5 mm & 2 mm** thickness at your convenience, by yourself.

\*\* No Guarantee In any circumstances. There can be colour variations In material from different batches. It Is advised to use same batch material to avoid colour variations.

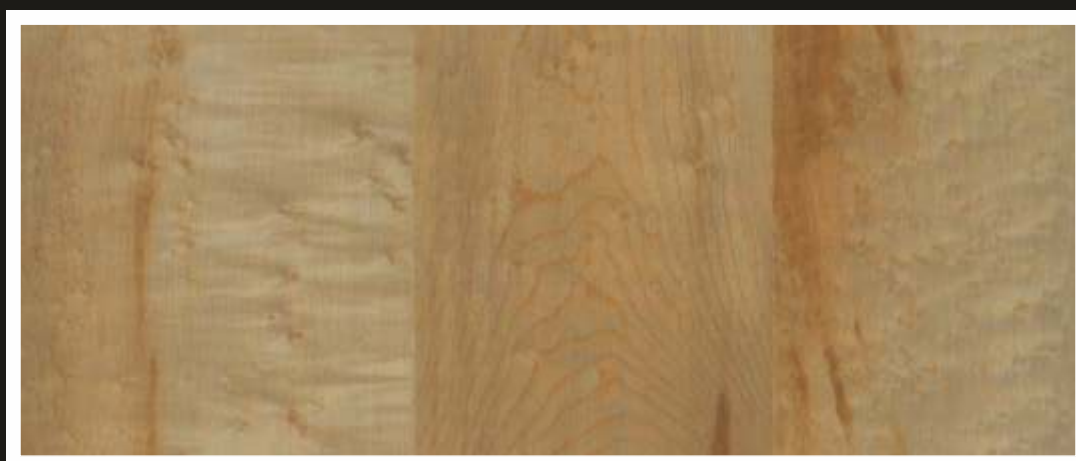




1.5 mm

**B-P-1521031**

## BUFFING TECHNOLOGY



1.5 mm

**B-P-1521033**

## EDGELESS TECHNOLOGY



1.5 mm

**B-P-1521034**

**90° bend NOT TO BE DONE** in this series.

• Kindly note: **EDGELESS** process to be done exclusively under the guidance of expert.  
**CHAMFERING & CNC CUTTING** can be done in **1.5 mm & 2 mm** thickness at your convenience, by yourself.

\* \* No Guarantee In any circumstances. There can be colour variations In material from different batches. It Is advised to use same batch material to avoid colour variations.

Against CRACK after  
applying **BERGA** sheet



# UNICO® KRYSTALA® 1

1 mm Thickness



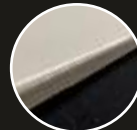
**GERMAN  
Technology**



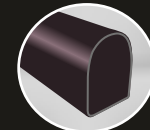
**New Revolutionary  
BREATHING  
Technology**



**BUFFING  
Technology**



**EDGELESS  
Technology**



**POST FORMING  
Technology**



**Anti Bacterial**



**SUPERIOR HIGH  
GLOSS**



**CNC Cutting**



**NO BLACK EDGES**



**Termite &  
Borer Free**



**NON TOXIC**



**WATER PROOF**

**90° bend NOT TO BE DONE** in this series.

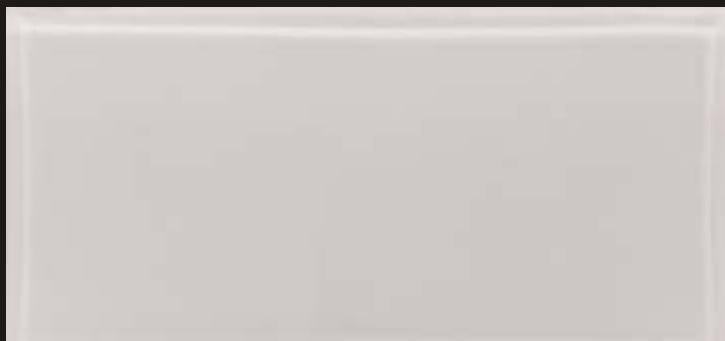
• Kindly note: **EDGELESS** process to be done exclusively under the guidance of expert.

**CHAMFERING & CNC CUTTING** can be done in **1.5 mm & 2 mm** thickness at your convenience, by yourself.

\* \* No Guarantee In any circumstances. There can be colour variations In material from different batches. It Is advised to use same batch material to avoid colour variations.

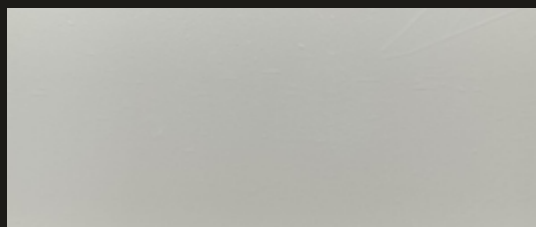


## EDGELESS TECHNOLOGY



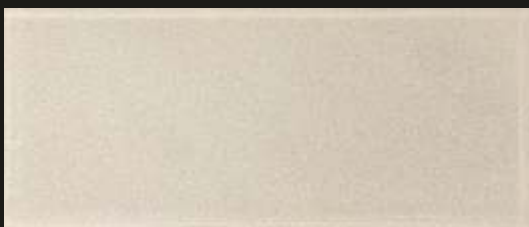
1 mm

**B-P-3021**



1 mm

**B-P-3045**



1 mm

**B-P-3022**



1 mm

**B-P-3002**



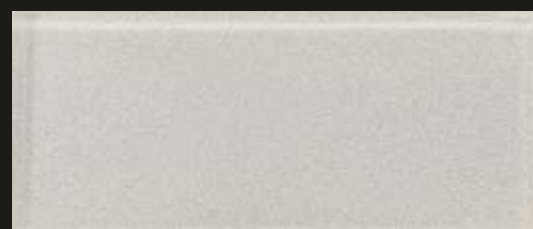
1 mm

**B-P-3049**



1 mm

**B-P-3033**



1 mm

**B-P-3007**





POST FORMING TECHNOLOGY



1 mm

**B-P-3023**



1 mm

**B-P-3044**



1 mm

**B-P-3009**



1 mm

**B-P-3004**



1 mm

**B-P-3014**



1 mm

**B-P-3053**



1 mm

**B-P-3055**



1 mm

**B-P-3020**



1 mm

**B-P-3003**



1 mm

**B-P-3054**



**90° bend NOT TO BE DONE** in this series.

• Kindly note: **EDGELESS** process to be done exclusively under the guidance of expert.

**CHAMFERING & CNC CUTTING** can be done in **1.5 mm & 2 mm** thickness at your convenience, by yourself.

\* \* No Guarantee In any circumstances. There can be colour variations In material from different batches. It Is advised to use same batch material to avoid colour variations.



1 mm **B-P-3031**



1 mm **B-P-3056**



1 mm **B-P-3006**



1 mm **B-P-3015**



1 mm **B-P-3029**



1 mm **B-P-3034**



**90° bend NOT TO BE DONE** in this series.

• Kindly note: **EDGELESS** process to be done exclusively under the guidance of expert.  
**CHAMFERING & CNC CUTTING** can be done in **1.5 mm & 2 mm** thickness at your convenience, by yourself.

\* \* No Guarantee In any circumstances. There can be colour variations In material from different batches. It Is advised to use same batch material to avoid colour variations.



# BUFFING TECHNOLOGY



1 mm

**B-P-3012**



1 mm

**B-P-3001**



1 mm

**B-P-3039**



1 mm

**B-P-3041**



1 mm

**B-P-3048**



**90° bend NOT TO BE DONE** in this series.

• Kindly note: **EDGELESS** process to be done exclusively under the guidance of expert.  
**CHAMFERING & CNC CUTTING** can be done in **1.5 mm & 2 mm** thickness at your convenience, by yourself.

\*\* No Guarantee In any circumstances. There can be colour variations In material from different batches. It Is advised to use same batch material to avoid colour variations.





1 mm **B-P-3027**



1 mm **B-P-3028**



1 mm **B-P-3052**



1 mm **B-P-3013**



1 mm **B-P-3046**



1 mm **B-P-3047**



1 mm **B-P-3017**



1 mm **B-P-3005**



1 mm **B-P-3008**

**90° bend NOT TO BE DONE** in this series.

• Kindly note: **EDGELESS** process to be done exclusively under the guidance of expert.  
**CHAMFERING & CNC CUTTING** can be done in **1.5 mm & 2 mm** thickness at your convenience, by yourself.

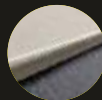
\*\* No Guarantee In any circumstances. There can be colour variations In material from different batches. It Is advised to use same batch material to avoid colour variations.



GERMAN  
Technology



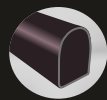
BREATHING  
Technology



EDGELESS  
Technology



BUFFING  
Technology



POST FORMING  
Technology



Anti Bacterial



SUPERIOR HIGH  
GLOSS



CNC Cutting



NO BLACK EDGES



Termite &  
Borer Free

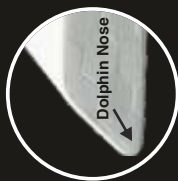


NON TOXIC



WATER PROOF

## NEW Dolphin Nose Technology



1 mm

B-J-2006



1 mm

B-J-2005



1 mm

B-J-2010



1 mm

B-J-2009



1 mm

B-J-2012

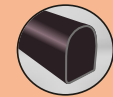
Against CRACK after  
applying BERGA sheet



GERMAN Technology







POST FORMING  
Technology



Anti Bacterial



CNC Cutting



NO BLACK EDGES



Termite &  
Borer Free



ANTI FINGER  
Print



NON TOXIC



WATER PROOF



1 mm

**B-O-9002**



1 mm

**B-O-9012**



1 mm

**B-O-9044**



1 mm

**B-O-9023**



1 mm

**B-O-9004**

**ANTI FINGER PRINT**

**ANTI SCRATCH**



1 mm

**B-O-9009**



1 mm

**B-O-9006**



1 mm

**B-O-9007**



1 mm

**B-O-9019**



1 mm

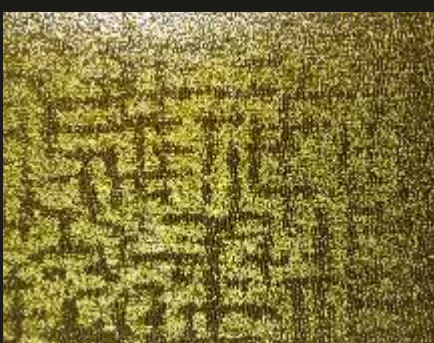
**B-O-9003**



Against CRACK after  
applying **BERGA** sheet



**GERMAN Technology**



1 mm

**B-O-9031**



1 mm

**B-O-9029**



1 mm

**B-O-9016**





**BERGA**  
Information Summary

# APPLICATION TO BE DONE FOR THE PRODUCTS MENTION BELOW IN

**BERGA®**  
ENHANCE LIFESTYLE  
LAMINATI



**BERGAcore**

**BERGAcore PLUS**

**BERGA MATTO PLUS**

**BERGA MATTO**

**Chiffon**

**FORESTA**

**Chiffon PLUS**

**Alvaroz LEGENDARY**

**OAKK LEGENDARY**



**Step 1 :** Remove the protective film from the SURFACE of the side which has to be PASTED.



**Step 2 :** Use only SAND PAPER to SCRATCH the surface of the side which have to be pasted



**Step 3 :** Do not use FARSI to scratch the sheet.



**Step 4 :** Kindly SCRATCH the sheet thoroughly to be applied to the back SURFACE as shown in the above picture.



**Step 5 :** Also SCRATCH plywood Surface



**Step 6**



**Step 7 :** Apply THIN layer of the glue on the surface of the sheet which has been scratch.



**Step 8 :** Apply THIN layer of the glue on the surface of the plywood which has been scratch.



**Step 9 :** BERGA PVC GLUE to be applied to both the SURFACE and stick together immediately.



**Step 10 :** Start pasting sheet from EDGE of the plywood.



**Step 11**



**Step 12**



**Step 13 :** Time taken for the setting of the glue is 10 to 15 hrs



**Step 14 :** Put Pressure on the sheet



**Step 15 :** Kindly remove the protective film only when full interior work is completed.



• Kindly note: **EDGELESS** process to be done exclusively under the guidance of expert.  
**CHAMFERING & CNC CUTTING** can be done in **1.5 mm & 2 mm** thickness at your convenience, by yourself.

\*\* No Guarantee In any circumstances. There can be colour variations In material from different batches. It Is advised to use same batch material to avoid colour variations.

# EUROPEAN

## SOLID SURFACE

### SERIES



**BERGAcore**

**BERGA MATTO+**

**BERGAcore<sup>®</sup>**  
PLUS

**BERGA MATTO<sup>®</sup>+**  
PLUS

# BERGAcore® PLUS

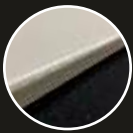
Against CRACK after  
applying **BERGA** sheet



GERMAN  
Technology



New Revolutionary  
BREATHING  
Technology



EDGELESS  
Technology



90° BEND  
Technology



CHAMFERING  
Technology



BUFFING  
Technology



Anti Bacterial



CNC Cutting



NO BLACK EDGES



NON TOXIC



WATER PROOF



Termite &  
Borer Free

**ANTI UV**



**BOTH SIDE USABLE TECHNOLOGY**

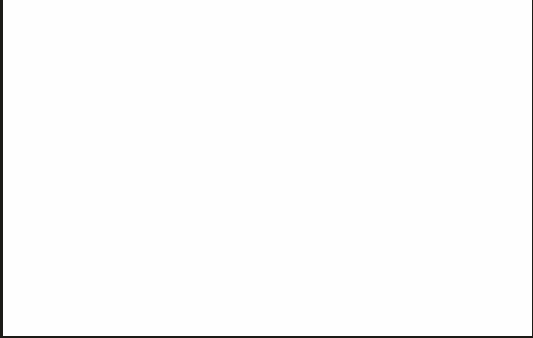
1 Side

Other Side

**BERGAcore®**  
PLUS

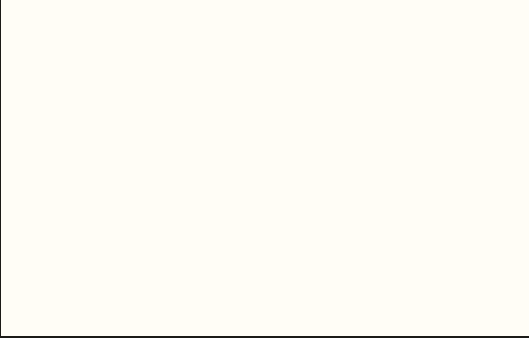
&

**BERGA MATTO®**  
PLUS



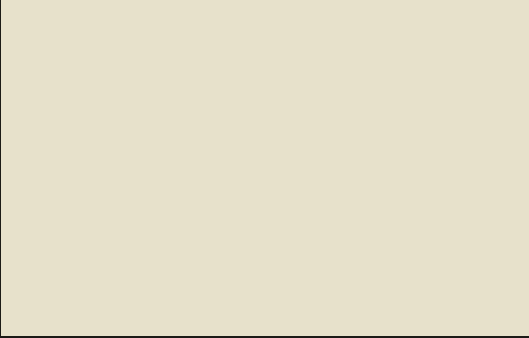
1 mm **B-D-10092**

*Winter White*



1 mm **B-D-10091**

*Cozy White*



1 mm **B-D-10095**

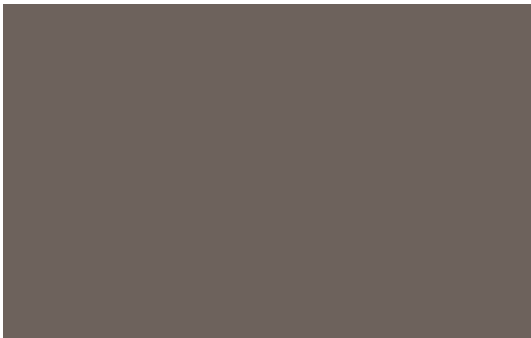
*Honey Dew*

**ANTI UV**



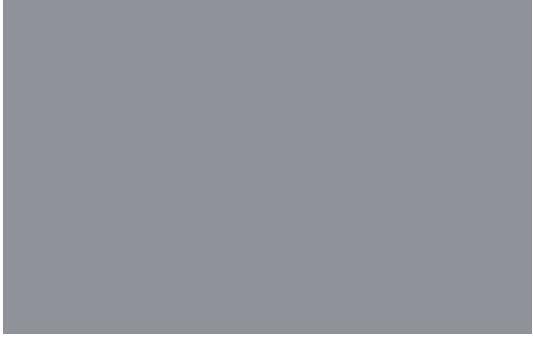
1 mm **B-D-10093**

*Sandy Wind*



1 mm **B-D-10100**

*Dusty Fawn*



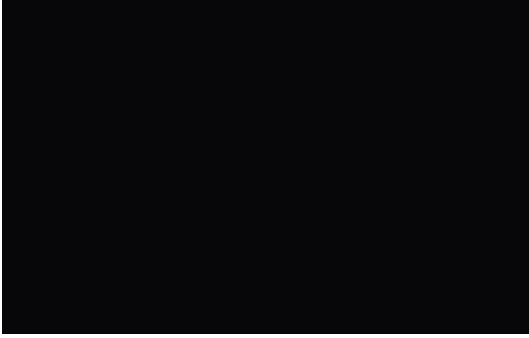
1 mm **B-D-10116**

*Smoky Shine*



1 mm **B-D-10094**

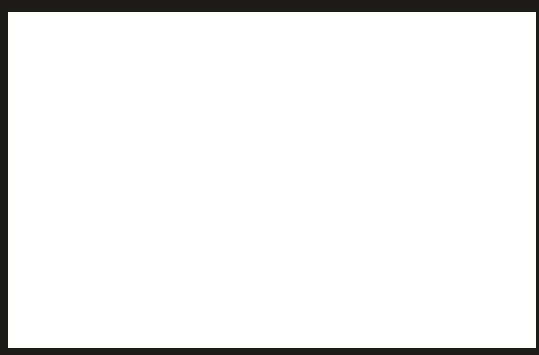
*Shadow Shell*



1 mm **B-D-10099**

*Licoric Black*





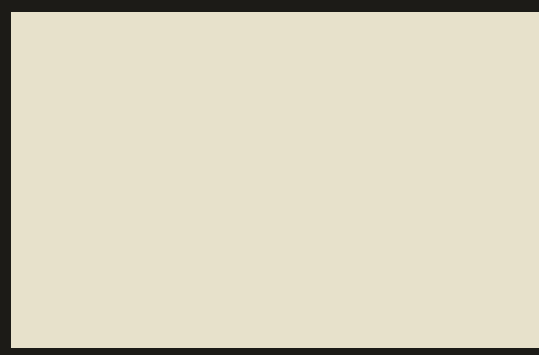
1.5 mm **B-D-10002**

*Winter White*



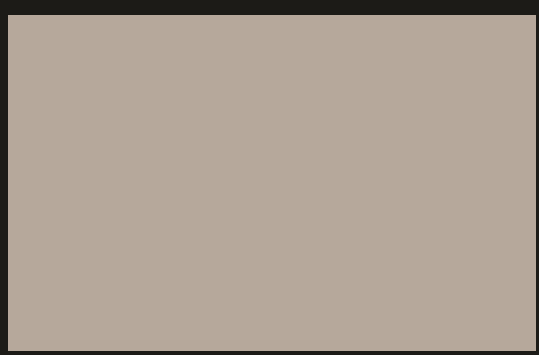
1.5 mm **B-D-10001**

*Cozy White*



1.5 mm **B-D-10005**

*Honey Dew*



1.5 mm **B-D-10003**

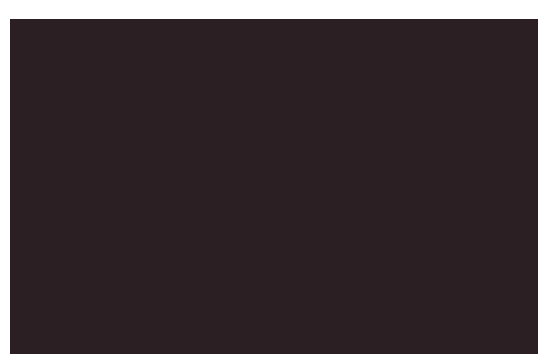
*Sandy Wind*

**EDGELESS TECHNOLOGY**



1.5 mm **B-D-10010**

*Dusty Fawn*



1.5 mm **B-D-10011**

*Dark Clove*



1.5 mm **B-D-10009**

*Licoric Black*



1.5 mm **B-D-10004**

*Shadow Shell*



1.5 mm **B-D-10012**

*Squirrel Grey*



1.5 mm **B-D-10016**

*Smoky Shine*



**ANTI UV**



1.5 mm

**B-D-10008**

*Canary Yellow*



1.5 mm

**B-D-10014**

*Marri Gold*



1.5 mm

**B-D-10007**

*Ruby Red*

**ANTI UV**



1.5 mm

**B-D-10018**

*Flamingo Blush*



1.5 mm

**B-D-10013**

*Rose Wine*



1.5 mm

**B-D-10017**

*Seafoam Green*



1.5 mm

**B-D-10006**

*Pear Pine*



1.5 mm

**B-D-10015**

*Alice Blue*



• Kindly note: **EDGELESS** process to be done exclusively under the guidance of expert.  
**CHAMFERING & CNC CUTTING** can be done in **1.5 mm & 2 mm** thickness at your convenience, by yourself.

\*\* No Guarantee In any circumstances. There can be colour variations In material from different batches. It Is advised to use same batch material to avoid colour variations.



# BERGA MATTO<sup>®</sup> PLUS

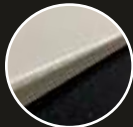
Against CRACK after  
applying **BERGA** sheet



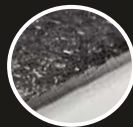
GERMAN  
Technology



New Revolutionary  
BREATHING  
Technology



EDGELESS  
Technology



90° BEND  
Technology



CHAMFERING  
Technology



BUFFING  
Technology



Anti Bacterial



CNC Cutting



NO BLACK EDGES



NON TOXIC



WATER PROOF



Termite &  
Borer Free

**ANTI UV**

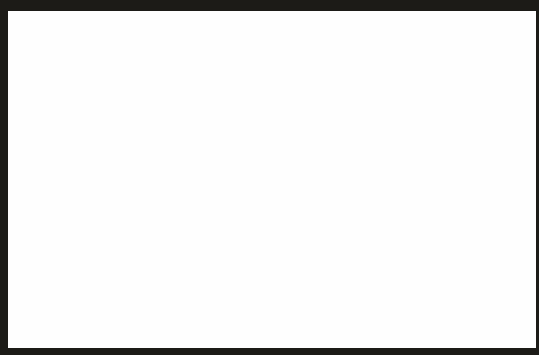
**BOTH SIDE USABLE TECHNOLOGY**

1 Side

Other Side

**BERGA MATTO®**  
PLUS

**& BERGAcore®**  
PLUS



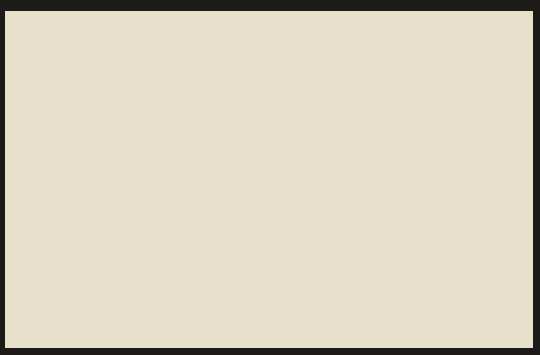
1 mm **B-M-11092**

*Winter White*



1 mm **B-M-11091**

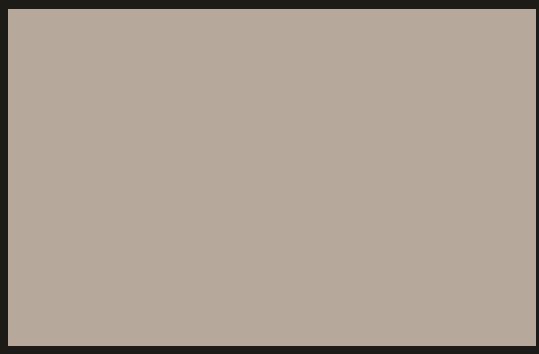
*Cozy White*



1 mm **B-M-11095**

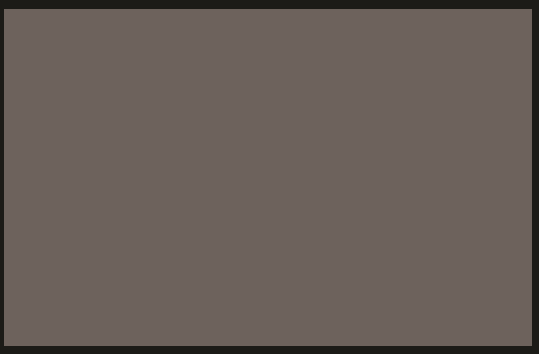
*Honey Dew*

**ANTI UV**



1 mm **B-M-11093**

*Sandy Wind*



1 mm **B-M-11100**

*Dusty Fawn*



1 mm **B-M-11116**

*Smoky Shine*



1 mm **B-M-11094**

*Shadow Shell*



1 mm **B-M-11099**

*Licoric Black*

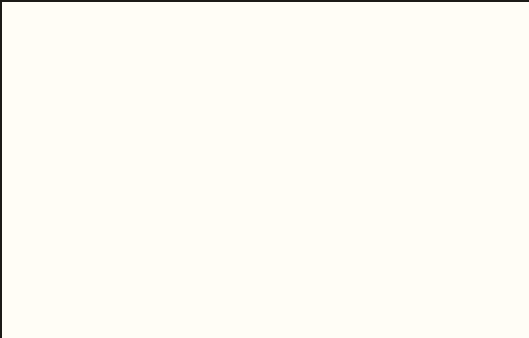




1.5 mm

**B-M-11002**

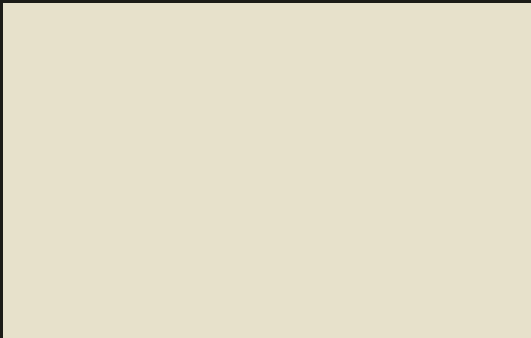
*Winter White*



1.5 mm

**B-M-11001**

*Cozy White*



1.5 mm

**B-M-11005**

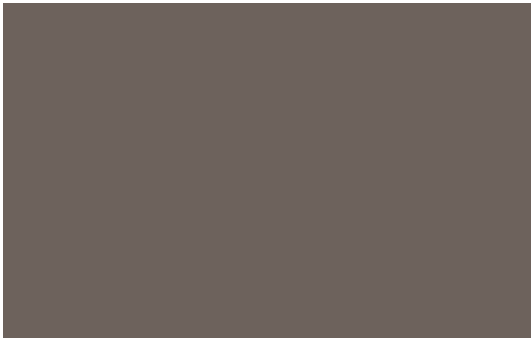
*Honey Dew*



1.5 mm

**B-M-11003**

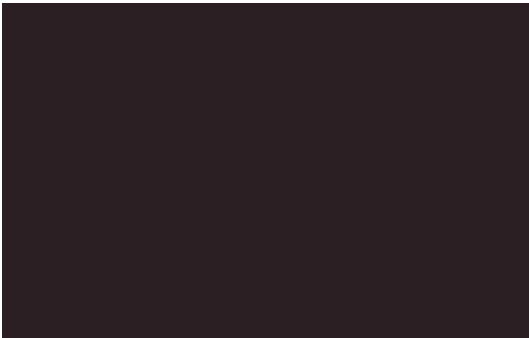
*Sandy Wind*



1.5 mm

**B-M-11010**

*Licoric Black*



1.5 mm

**B-M-11011**

*Dark Clove*



1.5 mm

**B-M-11009**

*Dusty Fawn*



1.5 mm

**B-M-11016**

*Smoky Shine*



1.5 mm

**B-M-11012**

*Squirrel Grey*



1.5 mm

**B-M-11004**

*Shadow Shell*

**ANTI UV**

• Kindly note: **EDGELESS** process to be done exclusively under the guidance of expert.  
**CHAMFERING & CNC CUTTING** can be done in **1.5 mm & 2 mm** thickness at your convenience, by yourself.

\*\* No Guarantee In any circumstances. There can be colour variations In material from different batches. It Is advised to use same batch material to avoid colour variations.





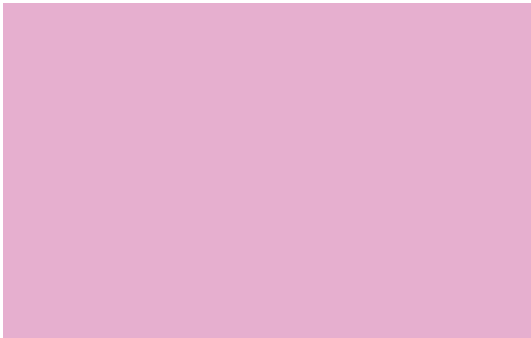
1.5 mm **B-M-11008**

*Canary Yellow*



1.5 mm **B-M-11014**

*Marri Gold*



1.5 mm **B-M-11018**

*Flamingo Blush*



1.5 mm **B-M-11007**

*Ruby Red*



1.5 mm **B-M-11013**

*Rose Wine*



1.5 mm **B-M-11015**

*Alice Blue*



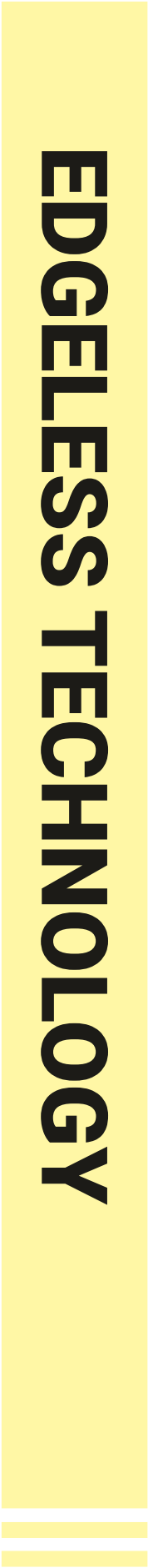
1.5 mm **B-M-11017**

*Seafoam Green*



1.5 mm **B-M-11006**

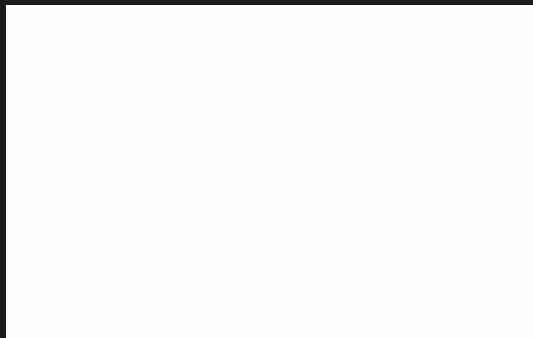
*Pear Pine*





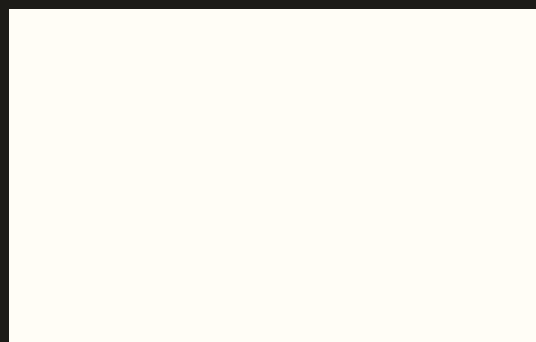
# BERGAcore

SUPERIOR HIGH GLOSS



1 mm

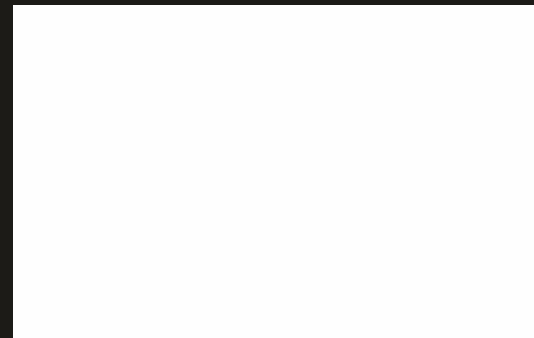
**B-D-6002**



1.5 mm

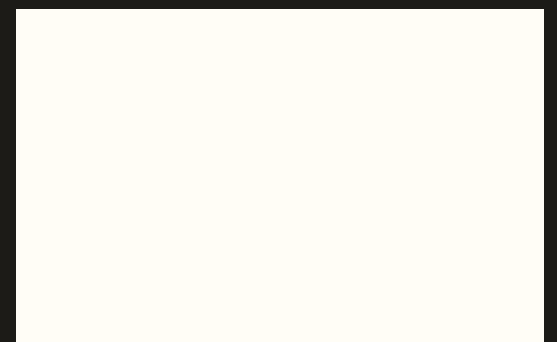
**B-D-6001**

# BERGA MATTO+



1 mm

**B-M-7099**



1.5 mm

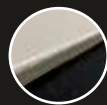
**B-M-7001**



GERMAN  
Technology



BREATHING  
Technology



EDGELESS  
Technology



BUFFING  
Technology



CHAMFERING  
Technology



90° BEND  
Technology



Anti Bacterial



CNC Cutting



NO BLACK EDGES



NON TOXIC



WATER PROOF



Termite &  
Borer Free



Against CRACK after applying **BERGA** sheet

# ALGORITHM 3D® TWILIGHT

Against CRACK after  
applying **BERGA** sheet



GERMAN  
Technology



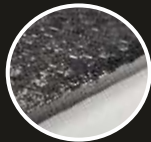
3D  
Technology



New Revolutionary  
BREATHING  
Technology



EDGELESS  
Technology



90° BEND  
Technology



CHAMFERING  
Technology



Anti Bacterial



ANTI FINGER  
Print



CNC Cutting



NO BLACK EDGES



NON TOXIC



WATER PROOF



Termite &  
Borer Free

• Kindly note: **EDGELESS** process to be done exclusively under the guidance of expert.  
**CHAMFERING & CNC CUTTING** can be done in **1.5 mm & 2 mm** thickness at your convenience, by yourself.

\* \* No Guarantee In any circumstances. There can be colour variations In material from different batches. It Is advised to use same batch material to avoid colour variations.





1.5 mm

**B** -T-16002

*Winter White*



1.5 mm

**B** -T-16001

*Cozy White*



1.5 mm

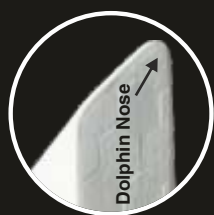
**B** -T-16009

*Licoric Black*





## TECHNOLOGY



### NEW Dolphin Nose Technology



1.5 mm

*Honey Dew*

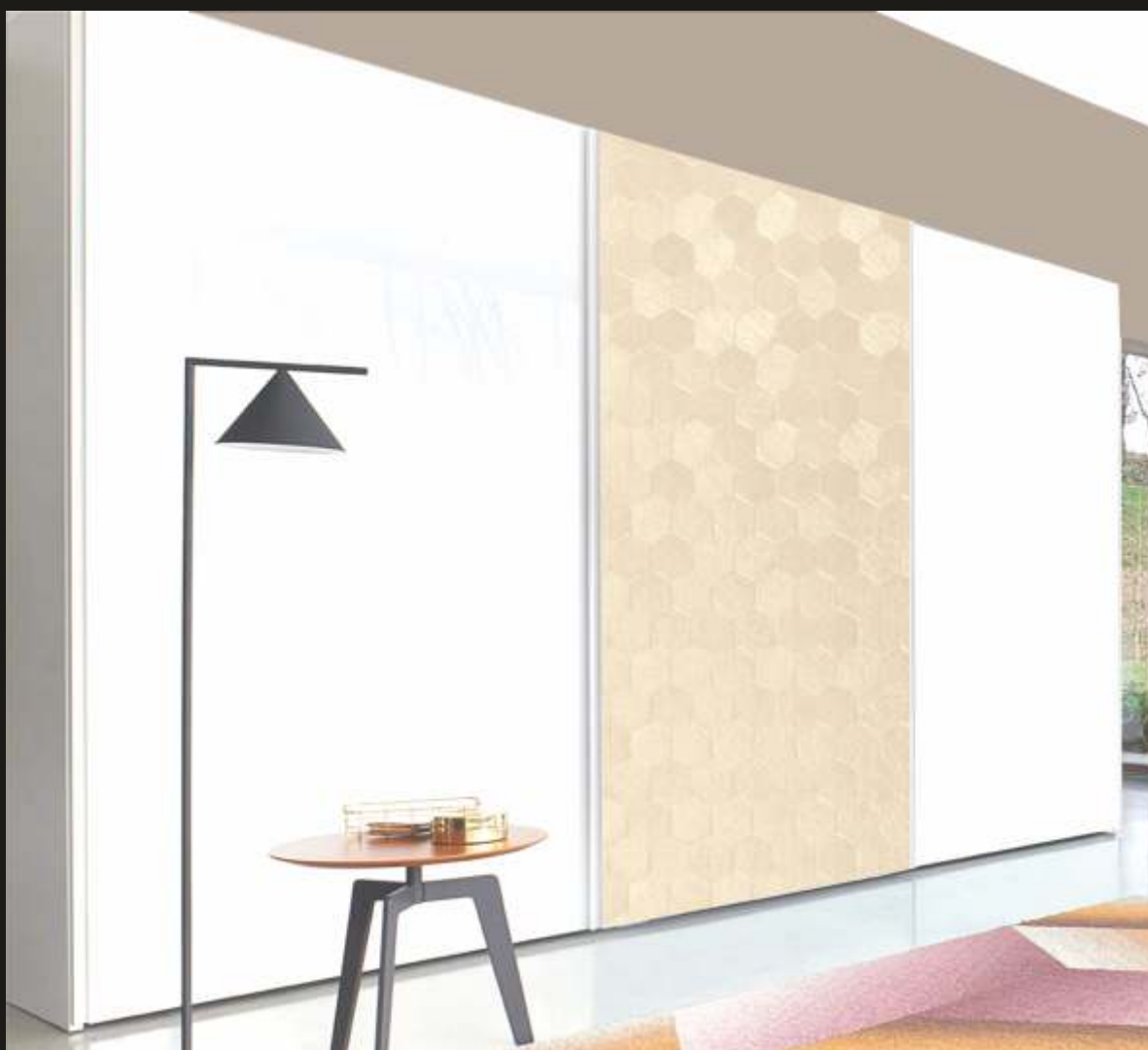
B-T-16005



1.5 mm

*Sandy Wind*

B-T-16003



• Kindly note: **EDGELESS** process to be done exclusively under the guidance of expert.  
**CHAMFERING & CNC CUTTING** can be done in **1.5 mm & 2 mm** thickness at your convenience, by yourself.

\*\* No Guarantee In any circumstances. There can be colour variations In material from different batches. It Is advised to use same batch material to avoid colour variations.





1.5 mm

*Dusty Fawn*

**B-T-16010**



1.5 mm

*Dark Clove*

**B-T-16011**

## EDGELESS TECHNOLOGY



• Kindly note: **EDGELESS** process to be done exclusively under the guidance of expert.  
**CHAMFERING & CNC CUTTING** can be done in **1.5 mm & 2 mm** thickness at your convenience, by yourself.

\* \* No Guarantee In any circumstances. There can be colour variations In material from different batches. It Is advised to use same batch material to avoid colour variations.





1.5 mm

*Smoky Shine*

**B** -T-16016



1.5 mm

*Squirrel Grey*

**B** -T-16012



1.5 mm

*Shadow Shell*

**B** -T-16004



**BEND TECHNOLOGY**

**90°**

• Kindly note: **EDGELESS** process to be done exclusively under the guidance of expert.

**CHAMFERING & CNC CUTTING** can be done in **1.5 mm & 2 mm** thickness at your convenience, by yourself.

**40** \*\* No Guarantee In any circumstances. There can be colour variations In material from different batches. It Is advised to use same batch material to avoid colour variations.



1.5 mm

**B** -T-16018

*Flamingo Blush*



1.5 mm

**B** -T-16017

*Seafoam Green*



## EDGELESS TECHNOLOGY

• Kindly note: **EDGELESS** process to be done exclusively under the guidance of expert.  
**CHAMFERING & CNC CUTTING** can be done in **1.5 mm & 2 mm** thickness at your convenience, by yourself.

\* \* No Guarantee In any circumstances. There can be colour variations In material from different batches. It Is advised to use same batch material to avoid colour variations.



# ALGORITHM 3D<sup>®</sup> MATTOGLOSS

Against CRACK after  
applying **BERGA** sheet



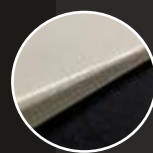
GERMAN  
Technology



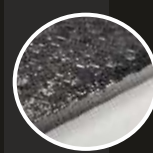
3D  
Technology



New Revolutionary  
BREATHING  
Technology



EDGELESS  
Technology



90° BEND  
Technology



CHAMFERING  
Technology



Anti Bacterial



CNC Cutting



NO BLACK EDGES



NON TOXIC



WATER PROOF



Termite &  
Borer Free

• Kindly note: **EDGELESS** process to be done exclusively under the guidance of expert.  
**CHAMFERING & CNC CUTTING** can be done in **1.5 mm & 2 mm** thickness at your convenience, by yourself.

\* \* No Guarantee In any circumstances. There can be colour variations In material from different batches. It Is advised to use same batch material to avoid colour variations.





1 Side



&

Other Side



BOTH SIDE USABLE TECHNOLOGY

SOLID SURFACE



1.5 mm

B-G-17002

*Winter White*



1.5 mm

B-G-17001

*Cozy White*



1.5 mm

B-G-17005

*Dusty Fawn*





1.5 mm

**B-G-17009**

*Licoric Black*



1.5 mm

**B-G-17004**

*Shadow Shell*

EDGELESS TECHNOLOGY



• Kindly note: **EDGELESS** process to be done exclusively under the guidance of expert.  
**CHAMFERING & CNC CUTTING** can be done in **1.5 mm & 2 mm** thickness at your convenience, by yourself.

\*\* No Guarantee In any circumstances. There can be colour variations In material from different batches. It Is advised to use same batch material to avoid colour variations.



1.5 mm

B-G-17012

*Squirrel Grey*



1.5 mm

B-G-17016

*Smoky Shine*

NEW Dolphin Nose Technology



TECHNOLOGY



Against **CRACK** after  
applying **BERGA** sheet



GERMAN  
Technology

• Kindly note: **EDGELESS** process to be done exclusively under the guidance of expert.  
**CHAMFERING & CNC CUTTING** can be done in **1.5 mm & 2 mm** thickness at your convenience, by yourself.

\* \* No Guarantee In any circumstances. There can be colour variations In material from different batches. It Is advised to use same batch material to avoid colour variations.

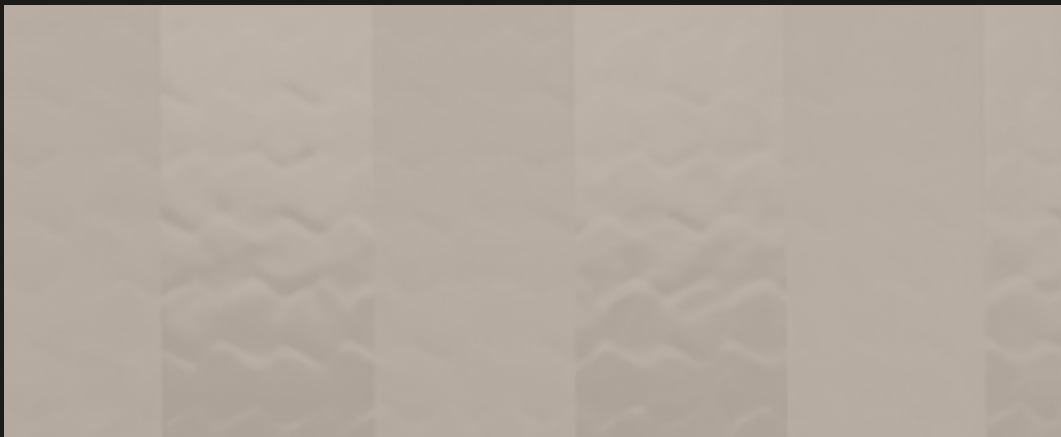




1.5 mm

**B-G-17011**

*Dark Close*



1.5 mm

**B-G-17010**

*Honey Dew*



1.5 mm

**B-G-17003**

*Sandy Wind*



**BEND TECHNOLOGY**  
**90°**



1.5 mm

**B-G-17018**

*Flamingo Blush*



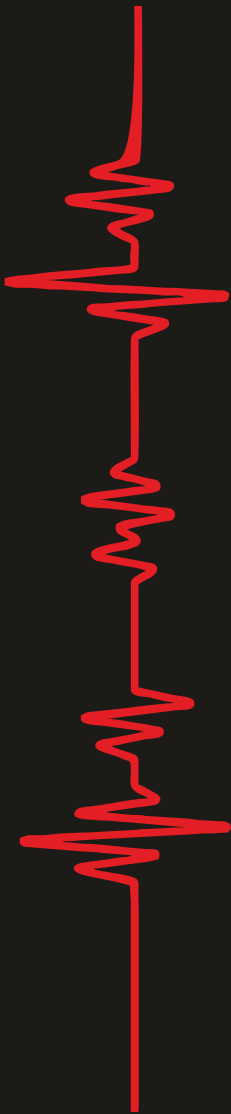
1.5 mm

**B-G-17017**

*Seafoam Green*



BREATHING TECHNOLOGY



• Kindly note: **EDGELESS** process to be done exclusively under the guidance of expert.  
**CHAMFERING & CNC CUTTING** can be done in **1.5 mm & 2 mm** thickness at your convenience, by yourself.

\* \* No Guarantee In any circumstances. There can be colour variations In material from different batches. It Is advised to use same batch material to avoid colour variations.



# Alvaroz® LEGENDARY

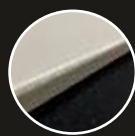
Against CRACK after  
applying **BERGA** sheet



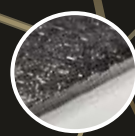
GERMAN  
Technology



New Revolutionary  
BREATHING  
Technology



EDGELESS  
Technology



90° BEND  
Technology



CHAMFERING  
Technology



Anti Bacterial



ANTI FINGER  
Print



CNC Cutting



NO BLACK EDGES



NON TOXIC



WATER PROOF



Termite &  
Borer Free





1.5 mm **B-S-14002**  
*Winter White*



1.5 mm **B-S-14001**  
*Cozy White*



1.5 mm **B-S-14005**  
*Honey Dew*



1.5 mm **B-S-14016**  
*Smoky Shine*



1.5 mm **B-S-14012**  
*Squirrel Grey*



1.5 mm **B-S-14004**  
*Shadow Shell*



1.5 mm **B-S-14009**  
*Dusty Fawn*

1 Side **Alvaroz®**  
LEGENDARY  
&  
Other Side **OAKK®**  
LEGENDARY





1.5 mm **B-S-14006**  
*Pear Pine*



1.5 mm **B-S-14017**  
*Seafoam Green*



1.5 mm **B-S-14018**  
*Flamingo Blush*



1.5 mm **B-S-14003**  
*Sandy Wind*



1.5 mm **B-S-14010**  
*Dusty Fawn*



1.5 mm **B-S-14011**  
*Dark Clove*

• Kindly note: **EDGELESS** process to be done exclusively under the guidance of expert.  
**CHAMFERING & CNC CUTTING** can be done in **1.5 mm & 2 mm** thickness at your convenience, by yourself.





Against CRACK after  
applying **BERGA** sheet



1.5 mm

B-L-15002

*Winter White*



1.5 mm

B-L-15001

*Cozy White*



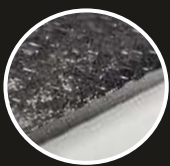
GERMAN  
Technology



New Revolutionary  
**BREATHING**  
Technology



EDGELESS  
Technology



90° BEND  
Technology



CHAMFERING  
Technology



ANTI FINGER  
Print



Anti Bacterial



CNC Cutting



NO BLACK EDGES



NON TOXIC



WATER PROOF



Termite &  
Borer Free

• Kindly note: **EDGELESS** process to be done exclusively under the guidance of expert.  
**CHAMFERING & CNC CUTTING** can be done in **1.5 mm & 2 mm** thickness at your convenience, by yourself.

\* \* No Guarantee In any circumstances. There can be colour variations In material from different batches. It Is advised to use same batch material to avoid colour variations.



Kindly Click on Samples To View Full Image



1.5 mm

**B-L-15005**

*Honey Dew*



1.5 mm

**B-L-15003**

*Sandy Wind*



1.5 mm

**B-L-15010**

*Dusty Fawn*



1.5 mm

**B-L-15011**

*Dark Clove*



1.5 mm

**B-L-15009**

*Licoric Black*



**1 Side**

**&**



**Alvaroz®**  
LEGENDARY

**Other Side**

**BOTH SIDE USABLE TECHNOLOGY**



1.5 mm **B-L-15004**

*Shadow Shell*



1.5 mm **B-L-15012**

*Squirrel Grey*



1.5 mm **B-L-15016**

*Smoky Shine*



1.5 mm **B-L-15006**

*Pear Pine*



1.5 mm **B-L-15017**

*Seafoam Green*



1.5 mm **B-L-15018**

*Flamingo Blush*

Kindly Click on Samples To View Full Image

**SOLID SURFACE**

• Kindly note: **EDGELESS** process to be done exclusively under the guidance of expert.  
**CHAMFERING & CNC CUTTING** can be done in **1.5 mm & 2 mm** thickness at your convenience, by yourself.  
\* \* No Guarantee In any circumstances. There can be colour variations In material from different batches. It Is advised to use same batch material to avoid colour variations.

# FORESTA

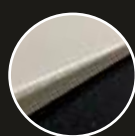
Against CRACK after  
applying **BERGA** sheet



GERMAN  
Technology



New Revolutionary  
BREATHING  
Technology



EDGELESS  
Technology



90° BEND  
Technology



CHAMFERING  
Technology



Anti Bacterial



ANTI FINGER  
Print



CNC Cutting



NO BLACK EDGES



NON TOXIC



WATER PROOF



Termite &  
Borer Free





1.5 mm **B-F-12002**  
*Winter White*



1.5 mm **B-F-12001**  
*Cozy White*



1.5 mm **B-F-12005**  
*Honey Dew*



1.5 mm **B-F-12003**  
*Sandy Wind*



1.5 mm **B-F-12010**  
*Dusty Fawn*



1.5 mm **B-F-12011**  
*Dark Clove*

**BOTH SIDE USABLE TECHNOLOGY**

1 Side **FORESTA** & **Chiffon** PLUS Other Side





1.5 mm **B-F-12009**  
*Licoric Black*



1.5 mm **B-F-12004**  
*Shadow Shell*



1.5 mm **B-F-12012**  
*Squirrel Grey*



1.5 mm **B-F-12018**  
*Flamingo Blush*



1.5 mm **B-F-12017**  
*Seafoam Green*

• Kindly note: **EDGELESS** process to be done exclusively under the guidance of expert.  
**CHAMFERING & CNC CUTTING** can be done in **1.5 mm & 2 mm** thickness at your convenience, by yourself.

\* \* No Guarantee In any circumstances. There can be colour variations In material from different batches. It Is advised to use same batch material to avoid colour variations.



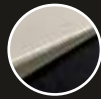
Against CRACK after applying BERGA sheet



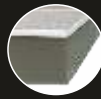
GERMAN  
Technology



BREATHING  
Technology



EDGELESS  
Technology



CHAMFERING  
Technology



90° BEND  
Technology



Anti Bacterial



CNC Cutting



NO BLACK EDGES



Termite &  
Borer Free



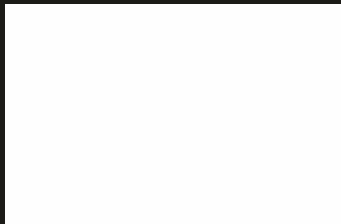
NON TOXIC



WATER PROOF

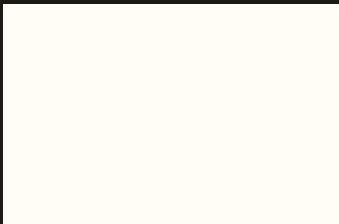
## SOLID SURFACE BOTH SIDE Usable Technology

1 Side  
**Chiffon PLUS** & **FORESTA**  
Other Side



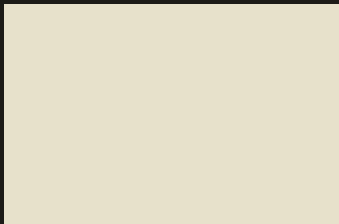
1.5 mm **B-S-13002**

*Winter White*



1.5 mm **B-S-13001**

*Cozy White*



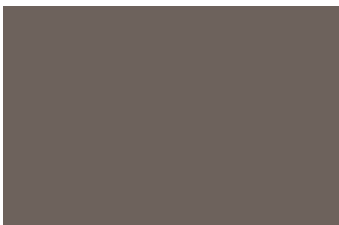
1.5 mm **B-S-13005**

*Honey Dew*



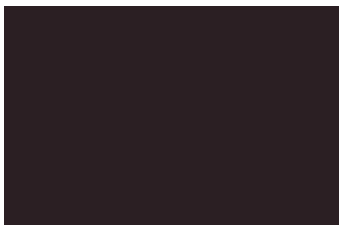
1.5 mm **B-S-13003**

*Sandy Wind*



1.5 mm **B-S-13010**

*Dusty Fawn*



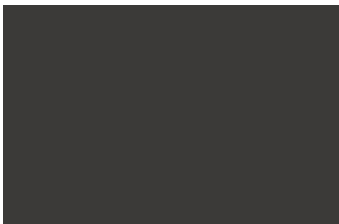
1.5 mm **B-S-13011**

*Dark Clove*



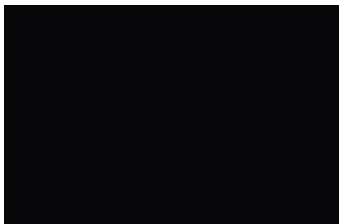
1.5 mm **B-S-13012**

*Squirrel Grey*



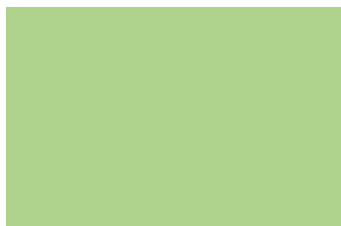
1.5 mm **B-S-13004**

*Shadow Shell*



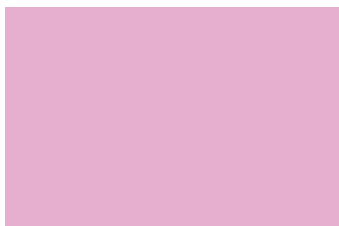
1.5 mm **B-S-13009**

*Licoric Black*



1.5 mm **B-S-13017**

*Seafoam Green*



1.5 mm **B-S-13018**

*Flamingo Blush*

• Kindly note: **EDGELESS** process to be done exclusively under the guidance of expert.  
**CHAMFERING & CNC CUTTING** can be done in **1.5 mm & 2 mm** thickness at your convenience, by yourself.

\* \* No Guarantee In any circumstances. There can be colour variations In material from different batches. It Is advised to use same batch material to avoid colour variations.





**BERGA**  
Information Summary

# APPLICATION TO BE DONE FOR THE PRODUCTS MENTION BELOW IN

**BERGA®**  
ENHANCE LIFESTYLE  
LAMINATI

## EUROPEAN SOLID SURFACE SERIES



**BERGAcore**

**BERGAcore PLUS**

**BERGA MATTO PLUS**

**BERGA MATTO**

**Chiffon**

**FORESTA**

**Chiffon PLUS**

**Alvaroz LEGENDARY**

**OAKK LEGENDARY**



**Step 1 :** Remove the protective film from the SURFACE of the side which has to be PASTED.



**Step 2 :** Use only SAND PAPER to SCRATCH the surface of the side which have to be pasted



**Step 3 :** Do not use FARSI to scratch the sheet.



**Step 4 :** Kindly SCRATCH the sheet thoroughly to be applied to the back SURFACE as shown in the above picture.



**Step 5 :** Also SCRATCH plywood Surface



**Step 6**



**Step 7 :** Apply THIN layer of the glue on the surface of the sheet which has been scratch.



**Step 8 :** Apply THIN layer of the glue on the surface of the plywood which has been scratch.



**Step 9 :** BERGA PVC GLUE to be applied to both the SURFACE and stick together immediately.



**Step 10 :** Start pasting sheet from EDGE of the plywood.



**Step 11**



**Step 12**



**Step 13 :** Time taken for the setting of the glue is 10 to 15 hrs



**Step 14 :** Put Pressure on the sheet



**Step 15 :** Kindly remove the protective film only when full interior work is completed.



• Kindly note: **EDGELESS** process to be done exclusively under the guidance of expert.  
**CHAMFERING & CNC CUTTING** can be done in **1.5 mm & 2 mm** thickness at your convenience, by yourself.

\*\* No Guarantee In any circumstances. There can be colour variations In material from different batches. It Is advised to use same batch material to avoid colour variations.

# FANTASTIC FIVE

- 

90° BEND  
Technology
- 

ANTI FINGER  
Print
- 

ANTI  
SCRATCH
- 

BREATHING  
Technology
- 

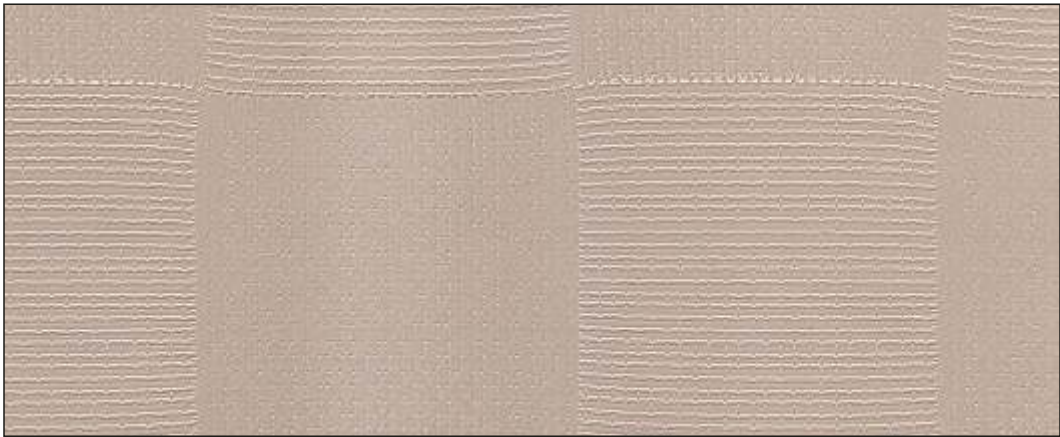
Anti Bacterial
- 

NO BLACK EDGES
- 

Termite &  
Borer Free
- 

NON TOXIC
- 

WATER PROOF



1.5 mm

**B-C-4010**

GERMAN TECHNOLOGY



1.5 mm

**B-C-4005**

## BREATHING TECHNOLOGY

• Kindly note: **EDGELESS** process to be done exclusively under the guidance of expert.  
**CHAMFERING & CNC CUTTING** can be done in **1.5 mm & 2 mm** thickness at your convenience, by yourself.

\*\* No Guarantee In any circumstances. There can be colour variations In material from different batches. It Is advised to use same batch material to avoid colour variations.



# ANTI FINGER PRINT



1.5 mm

**B-C-4011**

# ANTI SCRATCH



1.5 mm

**B-C-4008**

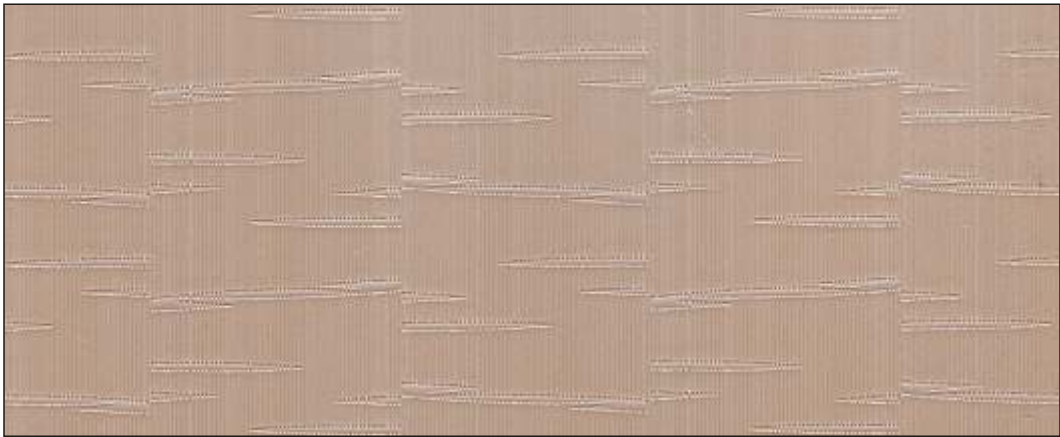
• Kindly note: **EDGELESS** process to be done exclusively under the guidance of expert.  
**CHAMFERING & CNC CUTTING** can be done in **1.5 mm & 2 mm** thickness at your convenience, by yourself.

\*\* No Guarantee In any circumstances. There can be colour variations In material from different batches. It Is advised to use same batch material to avoid colour variations.





**Against CRACK after  
applying BERGA sheet**



1.5 mm

**B-C-4014**

**TERMITE & BORER FREE**



1.5 mm

**B-C-4013**

• Kindly note: **EDGELESS** process to be done exclusively under the guidance of expert.  
**CHAMFERING & CNC CUTTING** can be done in **1.5 mm & 2 mm** thickness at your convenience, by yourself.  
\* \* No Guarantee In any circumstances. There can be colour variations In material from different batches. It Is advised to use same batch material to avoid colour variations.

We strongly recommend  
Berga Glue  
for all our products.

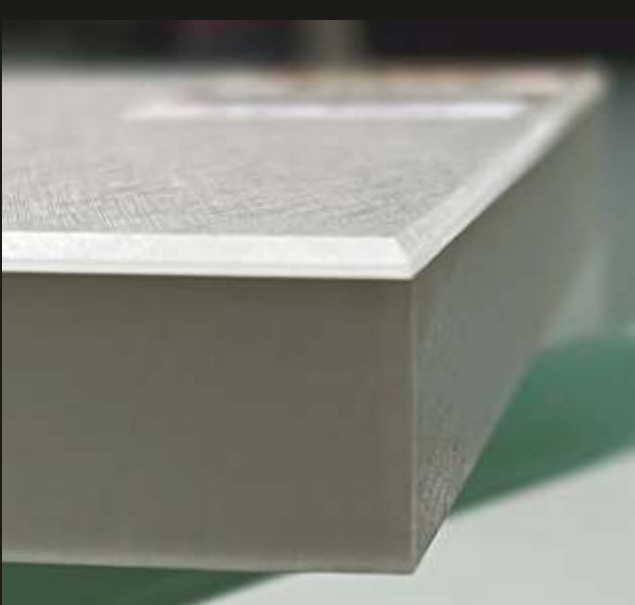


**BERGA** Information Summary

# BERGA®

ENHANCE LIFESTYLE  
LAMINATI

We recommend the use of **BERGA PVC GLUE** for pasting.  
**BERGA PVC GLUE** is special Adhesive for Acrylic & PVC Laminates.  
**We do not recommend the use of heat activated adhesives.**



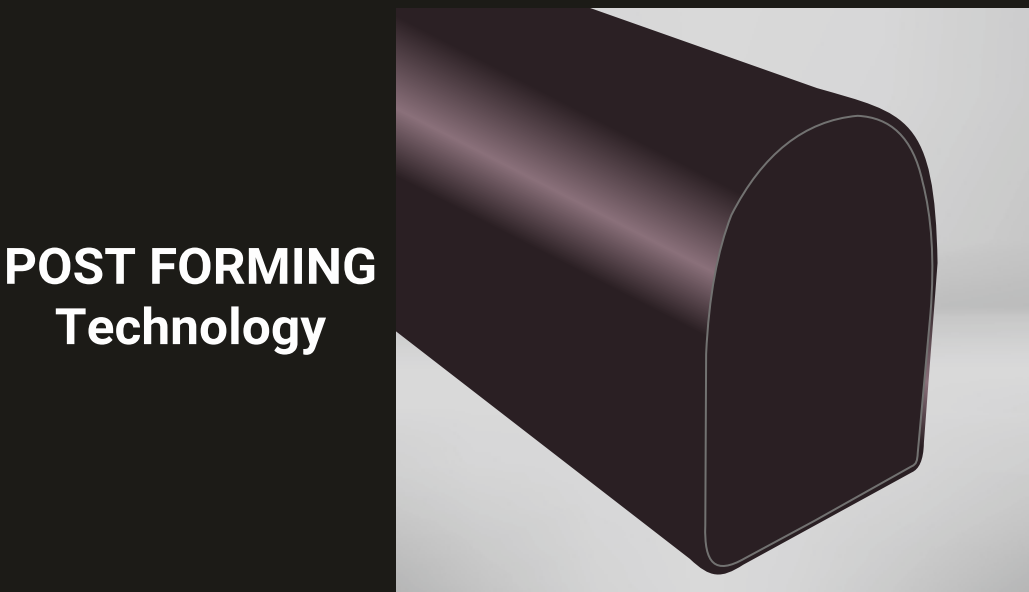
**CHAMFERING  
Technology**



**EDGELESS  
Technology**



**90° BEND  
Technology**



**POST FORMING  
Technology**

• Kindly note: **EDGELESS** process to be done exclusively under the guidance of expert.  
**CHAMFERING & CNC CUTTING** can be done in **1.5 mm & 2 mm** thickness at your convenience, by yourself.  
\* \* No Guarantee In any circumstances. There can be colour variations In material from different batches. It Is advised to use same batch material to avoid colour variations.

Kindly check and match physical sample before placing order as there can be lot to lot variation in colour

SR. NO.	<i>UNICO</i> <sup>®</sup> KRYSTALA <sup>®</sup> 2/1.5	REHAU EDGE BAND NO.
1	23001	1002U/373P (SHGL)
2	23004	110242 MATT
3	23005	110123 HGL
4	23006	DÉCOR 010P SHGL / 080PSHGL
5	23007	UNI-75638 HGL+
6	23008	UNI-112077
7	23012	UNI-110171
8	23013	75619 (SHGL)
9	23014	110226
10	23015	1009 U DARK GREY
11	23021	1001 U
12	23022	UNI-75713 HGL+/ 1002U
13	23027	110134 (SHGL)
14	23028	75717 HGL
15	23029	1003 U/ UNI-75617 (SHGL)
16	23031	1009 U
17	20033	1001 U
18	23039	110152 (SHGL)
19	23041	UNI-112078
20	23044	1007 U
21	23045	UNI-75701 HGL+/ 75713 HGL
22	23056	010P/S91E ALUMINIUM / ART 333698-008
SR. NO.	<i>UNICO</i> <sup>®</sup> KRYSTALA <sup>®</sup> 1/1.5	REHAU EDGE BAND NO.
1	3001	1002 U/ 373 P (SHGL)
2	3004	110242 MATT
3	3005	110123 HGL
4	3006	DÉCOR 010 P (SHGL)/080 P (SHGL)
5	3007	UNI-75638 HGL+
6	3008	UNI-112077
7	3009	75613
8	3012	UNI-110171
9	3013	75619 (SHGL)
10	3014	110226
11	3015	1009 U DARK GREY
12	3022	UNI-75713 HGL+/1002 U
13	3023	110135 (SGHL)/UNI-110224
14	3027	110134 (SHGL)
15	3028	751717 HGL
16	3029	1003 U / UNI-75617 (SHGL)
17	3031	1009 U
18	3039	110152 (SHGL)
19	3041	UNI-112078
20	3044	1007 U
21	3045	UNI-75701 HGL+/ 757513 HGL
22	3056	010 P / S91E ALUMINIUM/ART- 333698-008



Kindly check and match physical sample before placing order as there can be lot to lot variation in colour

SR. NO.	<b>BERGACore</b>	REHAU EDGE BAND NO.
1	6001	110207
2	6002	110207
SR. NO.	<b>BERGA MATTO+</b>	REHAU EDGE BAND NO.
1	7001	110207
2	7099	110207
SR. NO.	<b>BERGACore<sup>®</sup> PLUS</b>	REHAU EDGE BAND NO.
1	10091	110207 SHGL
2	10001	110207 SHGL
3	10092	75637 (SHGL)
4	10002	75637 (SHGL)
5	10093	UNI-75649 (SHGL)
6	10003	UNI-75649 (SHGL)
7	10094	UNI-75728 (SHGL)/ 110129
8	10004	UNI-75728 (SHGL)/ 110129
9	10095	110137 SHGL
10	10005	110137 SHGL
11	10006	UNI-69443 (SHGL)
12	10007	UNI-110128 (SHGL)
13	10008	75739 (HGL)/UNI-110125 (SHGL)
14	10099	75617 SHGL
15	10009	75617 SHGL
16	10100	75633 (SHGL)
17	10010	75633 (SHGL)
18	10011	UNI-110111 (SHGL)
19	10012	UNI-75733
20	10013	UNI-110115 (SHGL)
21	10014	UNI-75723 (SHGL)



Against CRACK after applying BERGA sheet



BERGA Information Summary

KNOWLEDGE OF APPLICATION ON BERGA® PRODUCT

DIFFERENT FEATURE ARE SUBJECTED TO DIFFERENT SERIES

SR. NO.	NAME OF THE SERIES	THICKNESS	BREATHING TECHNOLOGY	EDGE LESS TECHNOLOGY	BUFFING	90° BEND	CNC CUTTING	CHAMFERING	POST FORMING
01		2mm	YES	NO	NO	NO	YES	YES	NO
02		2mm	YES	YES	YES	NO	YES	YES	YES
03		1.5mm	YES	YES	YES	NO	YES	YES	YES
04		1mm	YES	YES	YES	NO	YES	NO	YES
05		1mm	YES	YES	NO	NO	YES	NO	YES
06		1mm	YES	YES	YES	NO	YES	NO	YES

• Kindly note: **EDGELESS** process to be done exclusively under the guidance of expert.

**CHAMFERING & CNC CUTTING** can be done in **1.5 mm & 2 mm** thickness at your convenience, by yourself.

\* \* No Guarantee In any circumstances. There can be colour variations In material from different batches. It Is advised to use same batch material to avoid colour variations.



Against CRACK after applying BERGA sheet



BERGA Information Summary

KNOWLEDGE OF APPLICATION ON BERGA® PRODUCT

DIFFERENT FEATURE ARE SUBJECTED TO DIFFERENT SERIES

SR. NO.	NAME OF THE SERIES	THICKNESS	BREATHING TECHNOLOGY	EDGE LESS TECHNOLOGY	BUFFING	90° BEND	CNC CUTTING	CHAMFERING	POST FORMING
01	 ALGORITHM 3D® TWILIGHT	1.5mm	YES	YES	NO	YES	YES	YES	NO
02	 ALGORITHM 3D® MATTOGLOSS	1.5mm	YES	YES	NO	YES	YES	YES	NO
03	 Alvaroz® LEGENDARY	1.5mm	YES	YES	NO	YES	YES	YES	YES
04	 OAKK® LEGENDARY	1.5mm	YES	YES	NO	YES	YES	YES	YES
05	 FORESTA	1.5mm	YES	YES	NO	YES	YES	YES	YES
06	 Chiffon® PLUS	1.5mm	YES	YES	NO	YES	YES	YES	YES
07	 BERGACore® PLUS	1mm & 1.5mm	YES	YES	YES	YES	YES	YES	YES
08	 BERGAMATTO® PLUS	1mm & 1.5mm	YES	YES	YES	YES	YES	YES	YES
09	 BERGACore®	1mm & 1.5mm	YES	YES	YES	YES	YES	YES	YES
10	 BERGAMATTO®	1mm & 1.5mm	YES	YES	YES	YES	YES	YES	YES
11	 FANTASTIC FIVE	1.5mm	YES	NO	NO	YES	NO	NO	NO



## Specifications

**THICKNESS** : Available 1.0 mm, 1.5 mm & 2.0 mm (+/-10%) according to the different products.

**STANDARD SIZE** : 8' X 4'

**RANGE** : These laminates come in a wide range of designs and colours.

**ADHESIVES** : We recommend the use of **BERGA PVC GLUE** for pasting. **BERGA PVC GLUE** is a special Adhesive for Acrylic & PVC Laminates. It is World's Strongest Adhesive. We do not recommend the use of heat activated adhesives.

**LAMINATION** : Proper substrates must be used and careful bonding procedures must be observed. Substrates should be of good quality plywood, high density particle board, or high quality fibre board. The face of the substrates must be smooth and free of grease, wax, dust, chips and other foreign matter. We DO NOT recommend any kind of coat like PU base, melamine, lamination (wax) on our products. These products are manufactured from natural resources. Therefore, this application will spoil the originality and natural beauty of the laminate sheet. There can be colour variations in material from different batches. It is advised to use same batch material to avoid colour variations.

**CUTTING & MACHINING** : These laminates can be cut, routed and drilled, with most standard wood working tools or equipments. All blades must be sharp. To remove any burns that may occur in the cutting process, we recommend the use of a smooth file to feather all corner edges.

**BENDING & FORMING** : These laminates can be bent and all radius bending should be handled in the same manner as all grades of non postforming decorative laminates.

**MAINTENANCE** : Any cleaning agent containing acids, alkalis or abrasives should not be used to clean this laminate. **Exposure to sunlight should be avoided.**

**STORAGE** : It is always advised that the laminates and the substrates are stored at temperatures between 22° C and 32° C at relative humidity of 45.55%.

**WARRANTY** : These products are free from all manufacturing defects and are fit and suitable for usual purpose under normal and proper use. The product must be inspected prior to installation.

**THESE PRODUCTS HAVE NO GUARANTEE, NO RETURN & NO EXCHANGE**

**KINDLY ONLY USE BERGA PVC GLUE FOR BEST RESULTS FOR OUR PRODUCTS**

**IMPORTANT NOTE : KEEP AWAY FROM DIRECT LIGHT TO PREVENT DISCOLOURATION**

**BERGA® is the only company which delivers 2 mm Acrylic LAMINATE in Roll form.**

- 90° bend **CAN BE DONE** in **EUROPEAN** series.
- Kindly note: **EDGELESS** process to be done exclusively under the guidance of expert.

## Special Note



Kindly scratch (rub) the sheet with polish paper (sand paper), to the surface which is going to be applied on the Plywood, Wood, MDF, etc... before applying Glue.




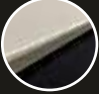



गोंद (ग्लू) लगाने से पहले, कृपया पॉलिश पेपर (सेन्ड पेपर) को उस तल के साथ रगड़े जो प्लायवुड, वुड, एम.डी.एफ. आदि... पर आवेदान (इस्तमाल) किया जाने वाला हैं।

## **IMPORTANT NOTE :**

"The colour and effect of the product may vary in E-catalogue as it is scanned and photographed. Due to very high reflectivity of the material it is not possible to capture the exact colour and effect of the product in it's actual form.

Kindly check hard copy of the catalogue for further details."

## DISTINCTIVE FEATURES

- 1)  Against CRACK after applying **BERGA** sheet
- 2) **1.5 mm Full Thickness**
- 3) **BERGA®** sheets can be delivered in Roll form without using flexible ply.
- 4)   **NEW Dolphin Nose Technology**
- 5)  **EDGELESS TECHNOLOGY**
- 6)  **BREATHING TECHNOLOGY**
- 7)  **CHAMFERING** can be done on **BERGA®** sheets manually.
- 8) **SOLID SURFACE** in 1.5 mm thickness.
- 9) **BOTH SIDE** useable **TECHNOLOGY**
- 10)  **GERMAN TECHNOLOGY**

Kindly visit our Website : [www.berga.in](http://www.berga.in) & Also can Scan QR-Code Given Below for **KNOWLEDGE OF APPLICATION & SPECIFICATIONS**.

## HARI OM LIFESTYLE

📍 24/170, Kuldeep Co-op. Society,  
Near Ration Office,  
Rajendra Nagar, Borivali (E).  
Mumbai - 400 066.

☎ +91-7506705222

● enquiry@berga.in

🌐 [www.berga.in](http://www.berga.in)



**BERGA** Information Summary